

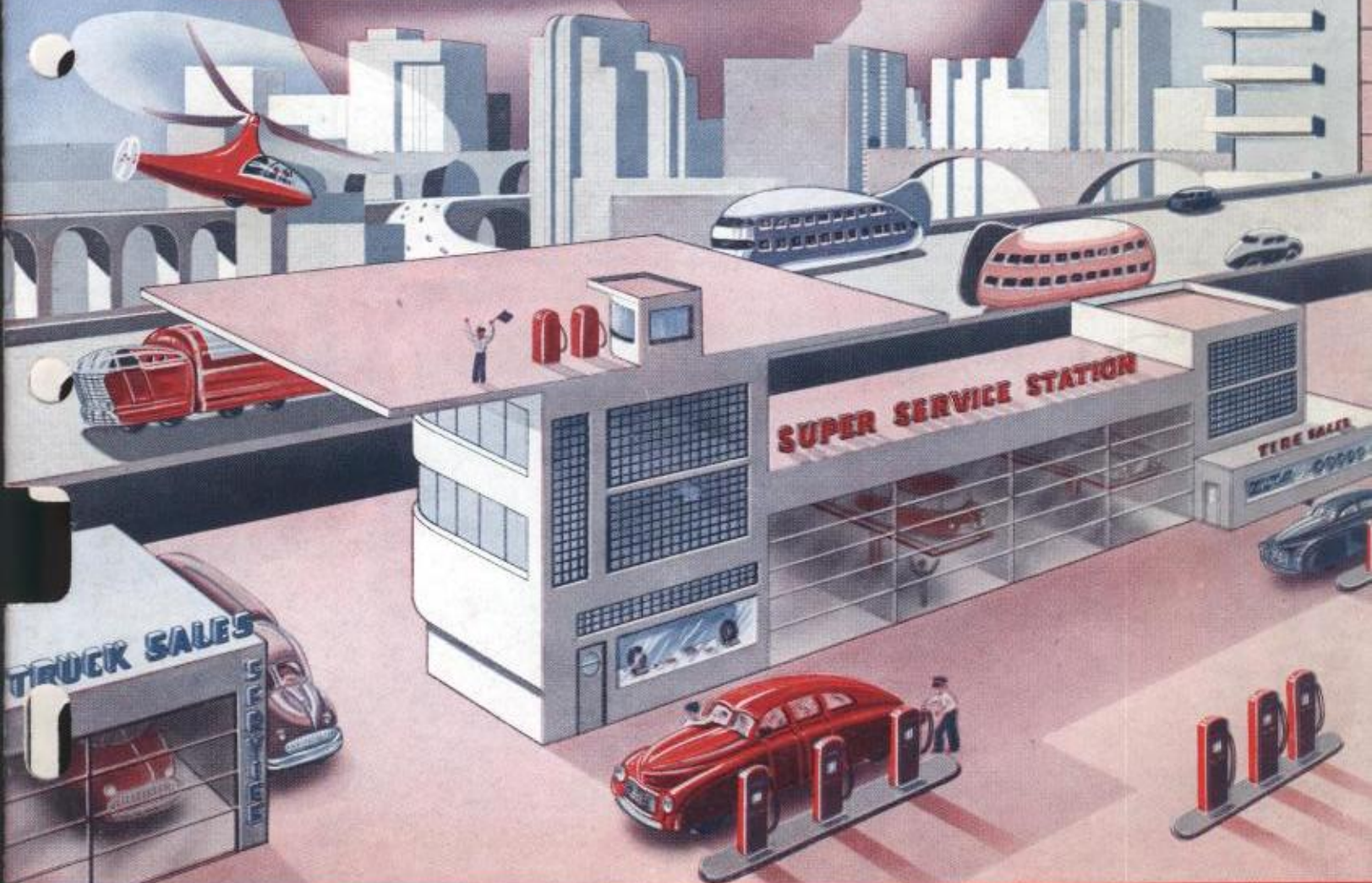
KEN

QUALITY TOOLS

MODERN DESIGN RIM AND TIRE CHANGING TOOLS

for SERVICE STATIONS • GARAGES • FLEET OPERATORS • TIRE REPAIR SHOPS

NATIONALLY KNOWN AND USED AROUND THE WORLD



THE KEN TOOL MANUFACTURING COMPANY . . AKRON 5, OHIO

SPECIALIZED WHEEL, TIRE AND RIM TOOLS FOR SERVICING ALL TYPES VEHICLES

**NOW
More Complete
Than Ever**

KEN QUALITY FORGED HAND TOOLS

Finest In Design . . . Proven In Service

KEN-TOOL is proud of its modern, efficient plant, where Ken-Tools are job designed and "FORGED FOR BETTER AND LONGER SERVICE."

The time and labor saving tools featured in this catalog are the results of years, continuous research and experience in their manufacture and proper designing.

We have devoted ourselves exclusively to the manufacturing of Tire, Rim and Wheel service tools for SERVICE STATIONS, GARAGES, TIRE REPAIRING AND RECAP-PING SHOPS, FARM TRACTORS, IMPLEMENTS, and AIRCRAFT WHEELS.

Over a period of years and in countless tests KEN-TOOLS have proved their superiority, efficiency, economy and long life, and for this reason are universally recognized and considered by tire experts to be the finest tools available, BEST BY ACTUAL TEST.

To avoid substitution of inferior imitations (of which there are many) we wish to caution purchasing agents and prospective tool buyers that genuine Ken-Tools are stamped KEN-TOOLS which is our trade mark and is so registered in the United States Patent Office. For your protection insist on KEN-TOOLS.

OUR GUARANTEE

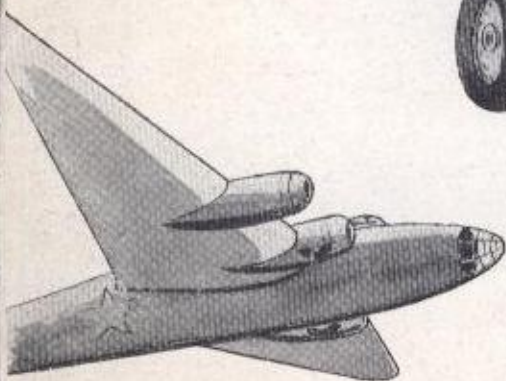
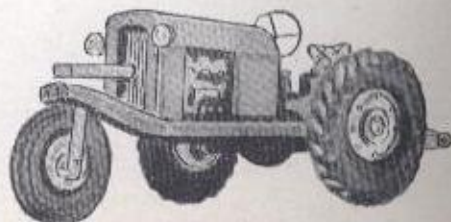
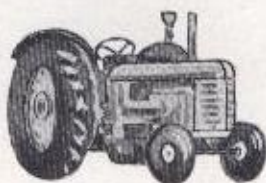
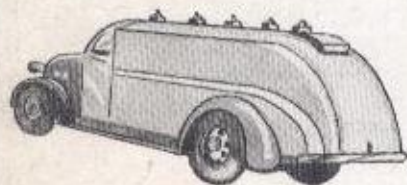
Ken automotive service tools are forged from the finest tool steels and will be found to be scientifically heat-treated by the latest proven methods to give long life and satisfactory service.

Any KEN-TOOLS bearing our trade mark if found to be defective in workmanship or material, which when returned to our factory with charges prepaid, will be replaced or credit issued.

THE KEN-TOOL MANUFACTURING COMPANY

REG. U. S. PAT. OFFICE

AKRON, OHIO



PASSENGER AND LIGHT TRUCK QUALITY KEN FAMOUS TIRE CHANGING IRONS REAL TIME AND LABOR SAVERS... FOR EVERY PURPOSE

1 — Only in Ken Tire Irons do you get these features.

2 — All hand forged, results in fine grain and dense structure, stronger and longer lasting tire tools.

3 — Made from the finest chrome nickel alloy steels,

4 — Every Tire Iron is scientifically heat-treated by the best and most modern method.

Straight standard spoon tire irons. Designed for fast tire changing. For all passenger cars and light trucks. Real time savers.

T-1X NET PRICE — Length 18" — Wt. 1 3/4 lbs.

T-1 NET PRICE — Length 15" — Wt. 24 oz.

Curved spoon, especially adapted for drop center type rims and general all around tire work. Curved spoon permits operator to throw or force in the bead without injury to the hands.

T-2X NET PRICE — Length 18" — Wt. 1 3/4 lbs.

T-2 NET PRICE — Length 15" — Wt. 24 oz.

General purpose tire iron. One of the old favorites for all around tire changing work.

T-5B NET PRICE — Length 17" — Wt. 16 oz.



One of Ken's outstanding patented drop center tire changing tools. No slipping. No tube pinching. A real time and labor saver. Finest on the market.



T-21R NET PRICE — Length 18" — Wt. 1 3/4 lbs.

T-21 NET PRICE — Length 16" — Wt. 25 oz.

Dual purpose 2 in 1 tire changing tool. Has no equal for all around efficient work. Properly designed to cover a wide range of tire repairing.

T-18 NET PRICE — Length 21" — Wt. 28 oz.

Ken 3-in-1 speed bead breaker, remove all tires from all types of rims, on or off the car. Same tools can be used to remove tires from rim. Simple to operate and fast. Length 18".

T-70 NET PRICE — (Per Pair) — Wt. 3 3/4 lbs.

New Ken LifeGuard Tube Removing Tool



The new illustrated tool sells itself. Everyone knows the tough job it is to remove LifeGuard tubes from tires. This job now made fast, simple and easy with the illustrated tool. Simple instructions attached to each tool.

T-17 NET PRICE — Wt. 3 lbs.

New Hub Cap Removing Tool Revolutionary . . . Holds Hub Cap

Finest hub cap remover ever designed. Removes and holds hub caps, from the smallest to the largest, on all new and old cars. Prevents marring. A must in every service station and garage. None can afford to be without it. Guaranteed satisfaction.

T-66 NET PRICE — Wt. 2 1/4 lbs.

Very practical tire tool for service stations, garages, and all tire shops. Used in spreading beads of tires, making inside inspection of casings and repairs very easy. The adjustable revolving spindle is so designed that the end roller may be set to spread tires from 5" to 7 1/2". Length 18".

T-10 NET PRICE — Wt. 44 oz.

Copyrighted 1950 — Ken-Tool Mfg., Akron, Ohio



KEN QUALITY TIRE CHANGING TOOLS

FOR TRUCKS, BUS, FARM TRACTORS AND AIRCRAFT

Truck and bus tire iron. A long straight spoon, especially adapted for truck and bus. Long enough to provide plenty of leverage, strong enough to stand up under the most severe use.

T-19 NET PRICE—Length 24"—Wt. 2½ lbs.

T-19A NET PRICE—Length 30"—Wt. 3 lbs.

T-19A for large Trucks, Buses, Tractors and Aircraft

Curved truck and bus tire changing irons. Correctly designed for fast and efficient tire work. Will save labor and time.

T-20 NET PRICE—Length 24"—Wt. 2½ lbs.

T-20A NET PRICE—Length 30"—Wt. 3 lbs.

T-20A for large Trucks, Buses, Tractors and Aircraft

New extra heavy duty tire changing iron for large trucks, busses, earth moving tires and aircraft. 30" long for plenty of leverage. Permits large tire changes to be made with ease. Much less effort, thus more changes per day. Extra heavy 7/8" stock x 30" long.

T-38 NET PRICE—Straight—Wt. 4¾ lbs.—Length 30"

T-39 NET PRICE—Curved—Wt. 4¾ lbs.—Length 30"

Ken general purpose tire iron. Long flat forged iron adapted for truck work. Made to stand up under hard use. Also point correctly designed to pry on wedge rings, side rings, etc.

T-5 NET PRICE—Length 20"—Wt. 20 oz.

New — Truck tire mounting tool, used to start first bead down over the rim, on all Budd rims and all other tight beads. This tool is definitely needed by all doing truck tire work. Easier and faster in mounting truck tires with tight beads, fulfills a long felt need. A real labor and time saver. 7/8" stock.

T-29 NET PRICE—Length 18"—Wt. 2½ lbs.



Illustrated is long, wide, flat and thin forged truck and passenger tire iron. Slightly curved at the end. Excellent heavy duty all around tire changing tool. Also very useful in loosening flaps and tubes from the casings.

T-28 NET PRICE—Length 17"—Wt. 2 lbs.

HEAVY TRUCK IRON. Made for heavy Goodyear truck rims and other rims. For loosening the tire from rim when rusted and the tire adheres to the rim.

T-24 NET PRICE—Length 18½"—Wt. 2¼ lbs.

KEN TRUCK LOCK RING REMOVERS

Famous Ken Firestone lock ring remover and replacer. Designed especially for Firestone RH and RI rims. Unusually good where these rims are used on BUDD WHEEL. This two in one lock ring tool covers the broadest possible range of rim and ring work. Extra long — EXTRA STRONG.

T-23 NET PRICE—Length 24"—Wt. 1½ lbs.

New tool required for servicing new 5 degree Firestone wide base rims, definitely needed to separate rings and rims. (See photo). No service station or any tire repair service shop can afford to be without one or two of these correctly designed tools.

T-25 NET PRICE—Length 18"—Wt. 1½ lbs.



Combination lock ring remover. This type of lock ring remover is modeled after out T 23. The opposite end is shaped to remove full circle lock rings. Eliminates the hazards of distorting rings and injury to the hands.

T-22 NET PRICE—Length 18"—Wt. 1½ lbs.

Ken special lock ring tool, the long curved end is designed to remove and apply RI continuous side ring rims. Short curved end is for Goodyear rims.

T-27 NET PRICE—Length 18"—Wt. 1½ lbs.

KEN QUALITY BEAD LOOSENING TOOLS

FOR PASSENGER, TRUCKS, BUS, TRACTORS, AIRCRAFT . . .



Here is the most outstanding truck bead loosening tool on the market. Revolutionizes the removing of all stubborn frozen rusted truck beads from all types of rims quickly and safely. These tools were used extensively by our armed forces, now made available for commercial use. The other end of the tool is used for a leverage bar when inserted into any universal truck rim wrench. Forged from $\frac{3}{4}$ " round stock.

T-50 NET PRICE — Length 25" — Wt. $3\frac{1}{2}$ lbs.



Same as above except heavy duty. Will work not only on standard truck tires but also on larger and heavier equipment. Simple and easy to use. The other end is designed for inserting into all universal truck wrenches as a leverage bar. The 33" length makes it a most excellent leverage bar. Forged from $\frac{7}{8}$ " round stock.

T-52 NET PRICE — Length 33" — Wt. $5\frac{1}{4}$ lbs.



NEW FARM TRACTOR BEAD LOOSENING TOOL. This tool is the same as the T 50 illustrated at the top of the page, except that it is shorter in order to clear tractor obstructions. No longer is it necessary to remove tractor wheels. Both beads inside and out can be loosened with great savings of time. Definitely needed by every tractor owner.

T-51 NET PRICE — Length 16" — Wt. $2\frac{1}{4}$ lbs.

Improved truck and bus driving iron, forged from quality alloy steel, designed especially for loosening and removing frozen rusted beads. Now forged extra wide and cured to fit truck rim. Will speed truck repair work, save labor and time. Length 12" — $1\frac{1}{4}$ " dia. stock.

T-26A NET PRICE — Wt. $4\frac{3}{4}$ lbs.



Ken-Presto Bead Breaker improved — Handle will not bend. Works on all passenger tires and safety wheels. They all come loose without injuring the tire or marring the wheel.

T-100 NET PRICE — Wt. 6 lbs.



OFF CAR

New Improved . . . Now One Tool For Standard Tires, Safety Tires, Super Cushion Tires

Ken Champion Bead Breaker. Simplest tire bead loosening tool made, yet covers the widest range of tire work. Forged from alloy steel (no castings). Works on all types of wheels, including new super cushion tires, on or off the car and light truck. Superior to any bead loosening tools now on the market. No welds or castings to break. Portable, can be carried in all service trucks.

T-200 NET PRICE — Wt. $7\frac{1}{2}$ lbs.

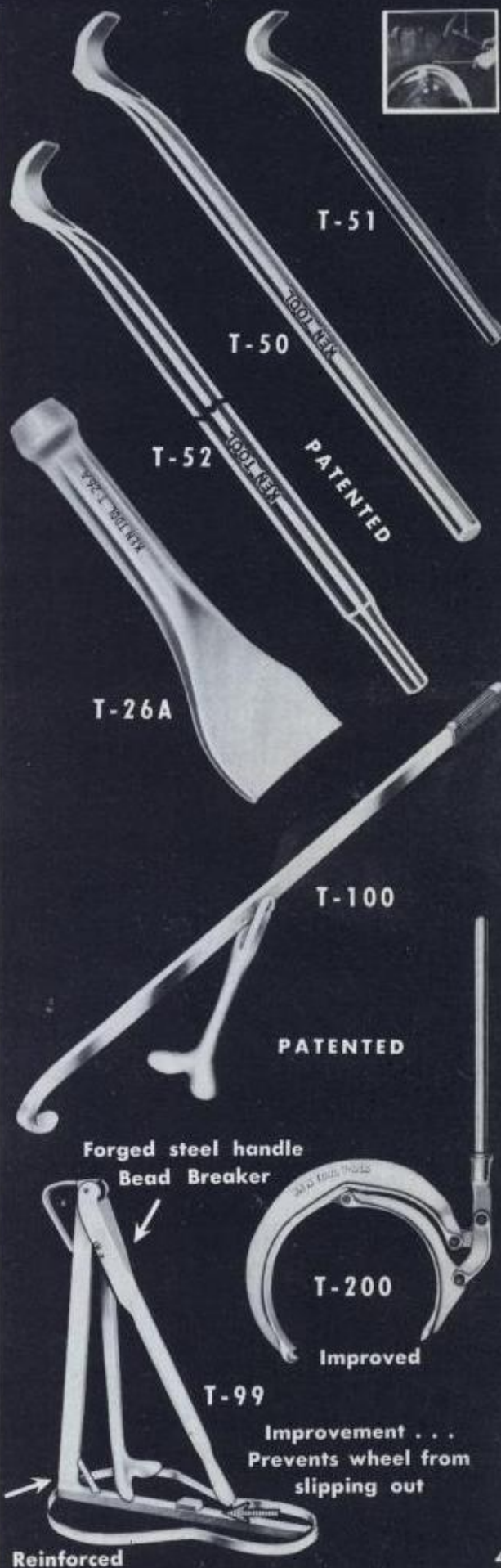


ON CAR

Quality Ken DeLuxe Bead Breaker

Forged Alloy Steel Handle and Bead Breaker Foot Simple . . . Easy . . . Fast method for demounting all sizes of passenger and light truck tires, regardless of how rusted or frozen to the rim, the KEN DELUXE BEAD BREAKER will easily remove it in seconds, without injury to tire, tube or rim. CONSTRUCTION . . . Rugged with specially FORGED alloy bead breaker foot and handle. Handle and bead breaker foot guaranteed for life.

T-99 NET PRICE — Wt. 15 lbs.



IMPACT TRUCK BEAD BREAKER

EXTRA HEAVY DUTY IMPACT TOOL

Illustrated above is the new designed and improved truck tire bead loosening tool that will break loose the most stubborn truck, bus or tractor tires. Here is a tool that will save time, money and labor.

The Ken truck bead breaker is precision built from the finest materials. The breaker foot is forged from chrome nickel alloy steel. It has a tremendous impact. More than similar tools. Unbreakable and is trouble free. Requires no floor space. Designed for shop or road use.

Guaranteed to stand up under the most severe use.

T-26B NET PRICE — Length 47" — Wt. 24½ lbs.
(Packed one to a carton)

Improved, new extra long, more leverage. The advantages of this tool are apparent at a glance. This tool is designed to aid in removing and replacing side lock rings on all Budd, Ford, Chevrolet, Dodge and GMC wheels. No tire repairing shop can afford to be without this valuable time saving tool.

T-48A NET PRICE — Longer length 40" — Wt. 5 lbs.

Combination lock ring remover and hinge type rim tool. Quickly unlocks all hinge type rims or locks any collapsible type including Firestone, Kelsey Hayes, etc.

T-4 NET PRICE — Length 19" — Wt. 2¼ lbs.

Here at last — a heavy duty truck tire spreader that all truck tire repairmen have been waiting for. This spreader is capable of quickly spreading heavy beads from the smallest to the largest. Extra wide opening that will stay locked in an open position until the operator releases it. Wide opening will permit removing and replacing both the flaps and tubes. It makes tire repairs easy. Also excellent as an inspection tool.

This tool is a must. One or more should be carried in every service truck. Made from the finest materials for long dependable service. Guaranteed Satisfaction.

T-54 NET PRICE — (Heavy Duty) — Wt. 6 lbs.

(Excellent companion Ken bead props T-9)

Easy and fast operating tire spreader.

Simply set jaws on bead. Slight down pressure, locks both beads open. It will remain locked until released by operator. Excellent for inserting and removing life guard tubes and for making tire inspections.

A must for all tire service men.

T-53 NET PRICE — Wt. 2¾ lbs.

(Excellent companion Ken bead props T-9)

KEN HAMMER HANDLES

Handles are all turned from superfine selected, all white second growth hickory for long life.

T-11BH NET PRICE (For T-11B Hammers)

T-11CH NET PRICE (For T-11C Hammers)

T-11HN NET PRICE (For T-11R Hammers)

T-11H NET PRICE (For T-11 Hammers)

T-33HN NET PRICE (For T-33R Hammers)

T-34HN NET PRICE (For T-34 Hammers)

T-35HN NET PRICE (For T-35 Hammers)

T-36HN NET PRICE (For T-36 Hammers)

QUALITY RUBBER HEADS Interchangeable

T-11RH NET PRICE (For T-11R, T-31 & T-33R)

T-34RH NET PRICE (For T-34, T-35, & T-36)



KEN JOB DESIGNED TIRE CHANGING HAMMERS

FOR . . . PASSENGER, TRUCK, BUS, FARM TRACTORS AND AIRCRAFT

At Last—a real truck tire hammer so designed to permit driving between rim and tire for breaking loose and driving stubborn beads off of rim. Special design tapered bead loosening tool is extra long, curved to fit rim, allowing operator if necessary to drive bead way down on rim before handle strikes top of rim edge. (Note illustration). Requires only one man to use. Speeds all truck tire changing work and passenger tires.

T-11C NET PRICE — Wt. 6 lbs.

Ken all-purpose forged tire hammer, standard for all around tire work. Will withstand hard usage, now made longer with tapered end for driving between tire and rim, heavier with special handle. Overall 14".

T-11 NET PRICE — Wt. 4½ lbs.

IMPROVED—Truck tire hammer for heavier tire work. Especially designed for removing stubborn tires which are rusted to the rims. Excellent all around tire changing hammer. Forged from Chrome Nickel Alloy Steel. Will stand everyday hard usage. Overall length 14½". (Finest quality handle).

T-11B NET PRICE — Wt. 5½ lbs.

Ken Patented Dual-Steel and rubber tire changing hammer, with outstanding improved features and replaceable head, properly designed for driving between rim and tire for breaking loose rusted and stubborn beads, while rubber end is used for driving on both tire and rims not marring either, with never slip hand shaped octagon-handle—overall length 15".

T-11R NET PRICE — Wt. 2¾ lbs.

T-11 RH RUBBER HEAD ONLY, LONG LIFE

Ken-Tool 2-way combination steel and rubber hammer for mounting tires, will not mar rims. Revolutionary features are immediately obvious to average layman, also for machine shops—body and fender shops—seaming sheet metal—drawing rivets and general usage. Replaceable rubber head feature—overall length 15".

T-33R NET PRICE — Wt. 2½ lbs.

T-33RH RUBBER HEAD, LONG LIFE

Ken Double Duty 2-in-1 steel rubber mallet, with replaceable rubber head feature. Superior to any common rubber mallet, because of much longer life, replaceable heads and heavier in weight. Especially adaptable for mounting both passenger and light truck tires, will not mar or injure rims, length 15".

T-31 NET PRICE — Wt. 2¾ lbs.

T-33 RH RUBBER HEAD, LONG LIFE, FOR T-31

Here illustrated is a new Ken-Tool development, a steel and rubber mallet with replaceable rubber heads, designed especially for speeding up all heavy truck tire work, farm tractors, earth movers and aircraft tires.

T-34 NET PRICE — Wt. 6 lbs.

Illustrated is one of the finest NEW KEN designed combination steel and rubber hammers ever developed for all-around truck tire work. Steel head used for driving on any object including tire tools. Rubber end used for mounting and dismounting truck tires. Overall length 18".

T-35 NET PRICE — Wt. 8½ lbs.

T-34RH NET PRICE HEAVY DUTY RUBBER HEAD

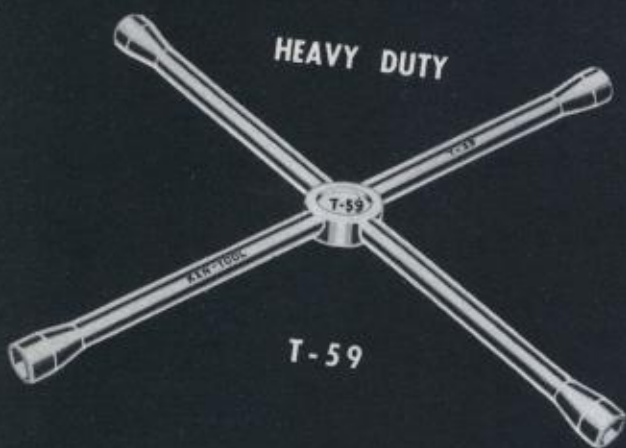
Another first by Ken-Tool. Its design permits driving between rim and tire for breaking loose, and driving stubborn beads off rim (similar to T-11C top of page) except for rubber head and heavier. Overall 18".

T-36 NET PRICE — Wt. 6½ lbs.

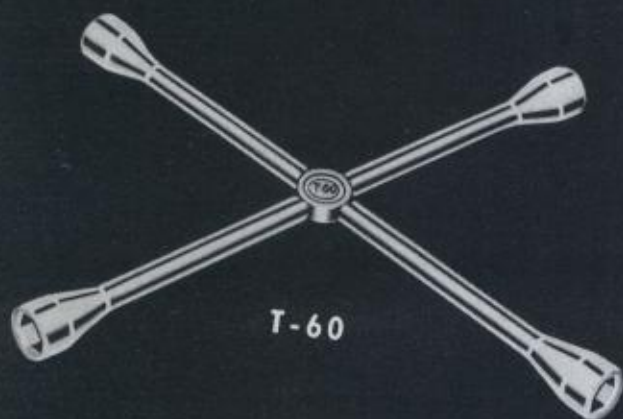


EXTRA

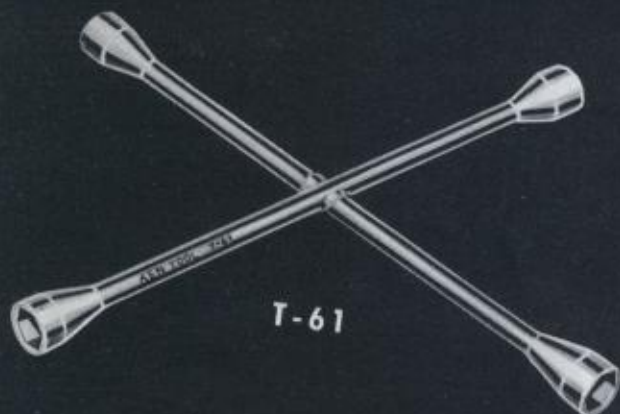
KEN - QUALITY 4-WAY WRENCHES NOW ALL FORGED LONGER REQUIRED FOR NEW CARS



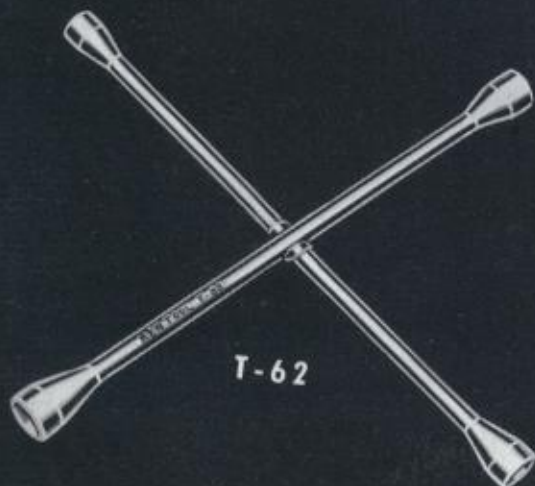
T-59



T-60



T-61



T-62

Here Illustrated Are The New Long Ken 4-Way Wrenches Definitely Needed To Remove Lug Nuts From All New Cars

NOTE: All Ken Tool 4-Way wrenches have been lengthened to meet the new car trend of wider body lines, so as to avoid scratching or marring paint on customer's fenders when spinning lug nuts on or off. Provides plenty of knuckle clearance. In addition to the above the extra long wrench provides tremendous leverage for removing the most stubborn nuts and will spin longer.

No Service Station or Tire Repair Shop can afford to be without one or more of these new long heavy duty wrenches if they are to render efficient service on any car, new or old. It is a must. Forged from CHROME NICKEL ALLOY STEEL. 21 1/2" overall, extra heavy 5/8" stock. Has the necessary two popular 3/4" deep sockets, which almost doubles the usefulness of this wrench. The other sockets are 13/16" and 7/8". Guaranteed for life against breakage. (One-piece forging).

T-59 NET PRICE — New length 21 1/2" — Wt. 4 1/2 lbs.
(Packed 25 to a carton)

Standard Extra Long 4-Way Wrench

The extra long standard one-piece 4-way wrenches are job-designed to meet the trend of wider body and fender lines. The long wrench arms are definitely needed to remove lug nuts from all new cars so as to avoid hitting or marring paint on fenders. Wrench has plenty of knuckle clearance for spinning the wrench, also the extra long leverage arms make it simple and easy to remove even the hard to budge lug nuts.

Service stations, tire repair shops, garages, etc., none can afford to be without one or more of these new improved one-piece 4-way wrenches.

Forged from CHROME NICKEL ALLOY STEEL, 9/16" round standard rim wrench bar stock 21 1/2" long. The deep sockets are forged with the required popular two 3/4" sockets. The usefulness of the two 3/4" sockets almost doubles the life of the wrench. Socket sizes are 13/16" and 7/8". Guaranteed for life against breakage. One-piece forging.

T-60 NET PRICE (New length 21 1/2") — Wt. 3 1/2 lbs.
(Packed 25 to a carton)

Same as standard T-60, except the intersection of the wrench is forge welded for unusual strength. This 4-way is extremely popular and is widely accepted. Forged from CHROME NICKEL ALLOY STEEL. (Not to be confused with cheap soft carbon wrenches). Sockets will not split or round out. The tremendous long leverage will spin off the most stubborn nuts.

Has two popular 3/4" deep sockets doubling the usefulness of the wrench, also has the popular 13/16" and 7/8" deep sockets. Guaranteed for life against breakage.

T-61 NET PRICE — New length 21 1/2" — Wt. 3 1/2 lbs
New improved longer (packed 25 to a carton)

T-62 NET PRICE — Same as above except 17" long — Wt. 2 3/4 lbs.
New . . . Improved Longer — Packed 25 To A Carton

**Ken Quality Alloy Rim Wrenches Are The
Finest Value On The Market.**

**(Do Not Confuse With Soft Carbon Wrenches.)
Guaranteed For Life Against Breakage.**

TRUCK WRENCHES HEAVY DUTY

EXTRA LONG, QUALITY FORGED, ALLOY STEEL

Ken-Tool Is First With The Latest Light Truck Wrench

Will fit all Chevrolet trucks, new or old

The KEN light truck 4-way rim wrench, which fulfills a long felt need, is urgently needed in the field. This time saving, new rim wrench will handle a majority of the present trucks and most all new light trucks coming on the market, with special lug nuts, including 1946-1950 Chevrolet. Required by all who service and repair tires.

SPEEDS UP all wheel removing jobs, designed and manufactured exclusively by KEN-TOOL. Hot forged from $\frac{3}{4}$ " round stock, Nickel Chrome Alloy Steel, in the following popular required socket sizes: $\frac{1}{8}$ ", $\frac{7}{8}$ ", $1\frac{1}{8}$ " and $1\frac{1}{2}$ ". Guaranteed unbreakable, extra long for powerful leverage. Has one outside tapered socket for Dayton wheels.

T-90 NET PRICE — New length $23\frac{1}{2}$ " — Wt. $6\frac{1}{4}$ lbs.
(Packed 15 to a carton)



Ken Quality Heavy Duty Truck 4-Way Rim Wrench

Forged from Chrome Nickel Alloy Steel, solid one-piece wrench. Needed by all Service Stations, Fleet Owners, Retread and Tire Repair Shops. This wrench is used on all makes of trucks for removing and mounting truck wheels. Breaks loose

the toughest, most stubborn nuts, has tremendous power, $\frac{3}{4}$ " hole in the center is provided for inserting any leverage bar, when needed. (See illustration). Wrench has six socket sizes: $1\frac{1}{8}$ ", $1\frac{3}{8}$ ", $1\frac{1}{4}$ " and $1\frac{1}{2}$ " hexagon openings. $\frac{1}{8}$ " square for Fords and $\frac{5}{8}$ " square for Chevrolet trucks.

T-95 NET PRICE — New length $25\frac{1}{2}$ " — Wt. $14\frac{1}{2}$ lbs.
(Packed 6 to a carton)

The illustrated extra heavy duty 4-way rim wrench is in every respect the same as the T-95 except the center has no opening for the leverage bar.

The extra long arms permit tremendous leverage and body clearance. Job designed to give greatest speed in removing the most stubborn nuts. Will cover the widest range of all truck work. Forged from Chrome Nickel Alloy Steel. Wrench contains the following popular socket sizes — $1\frac{1}{8}$ ", $1\frac{3}{8}$ ", $1\frac{1}{4}$ ", $1\frac{1}{2}$ " and $\frac{1}{8}$ " square socket forged in the back of the $1\frac{1}{8}$ " socket.

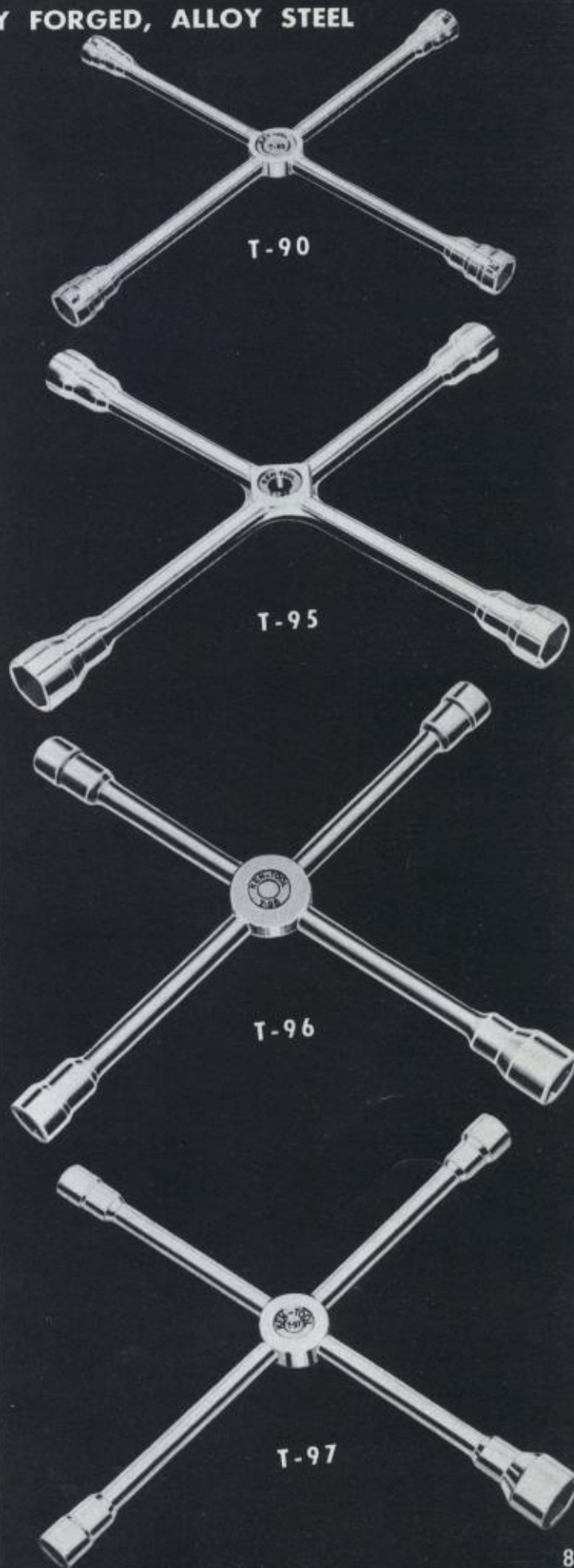
T-96 (packed 6 to a carton) Wt. 14 lbs.

Extra new length $25\frac{1}{2}$ " (Packed 6 to a carton)

Here is wrench efficiency plus Ken quality. Priced within the reach of the smallest operator. Powerful long arms to break loose the tightest of those stubborn wheel lug nuts. Will speed all of your nut removing jobs. Forged from Chrome Nickel Alloy Steel. Sockets will not split or round out. Socket sizes $1\frac{1}{8}$ ", $1\frac{3}{8}$ ", $1\frac{1}{4}$ ", $1\frac{1}{2}$ " and $\frac{1}{8}$ " square socket is forged in the back of the $1\frac{1}{8}$ " socket.

T-97 (packed 6 to a carton) Wt 10 lbs.

Extra new length $24\frac{3}{4}$ " (Packed 6 to a carton)



KEN QUALITY UNIVERSAL HEAVY DUTY TRUCK WRENCHES HOT FORGED FROM CHROME NICKLE ALLOY



Ford Truck Rim Wrench, a very popular universal wrench for Ford trucks. The wrench is forged with two necessary sockets, 1 1/2" and 1 3/8" square socket, which handles all Budd wheels on Fords, some Dodge trucks, etc.

TR-98 NET PRICE — Length 16" — Wt. 4 3/4 lbs.

(Especially designed for Budd wheels)

Illustrated is a Universal Truck wrench, equipped with three necessary sizes, to fit Ford wheels, Budd wheels, Dodge and others, with following sizes: 1 1/8", 1 3/8" and 1 1/2" socket.

TR-1 NET PRICE — Length 16" — Wt. 4 3/4 lbs.

Wrench illustrated is equipped with the three necessary deep forged sockets for servicing Chevrolet dual wheels. (5/8" square, 1" and 1 1/4" hex openings).

TR-2 NET PRICE — Length 16" — Wt. 4 1/2 lbs.

For the NEW CHEVROLET trucks 1936 to 1950 series. Has the required 1 3/8" socket opening to service these trucks and 7/8" socket for servicing other popular Chevrolet trucks.

TR-2X NET PRICE — Length 16" — Wt. 4 1/2 lbs.

New Studebaker truck wrench. Also for G.M.C., Reo, Fruehauf Trailers, Federal Trucks, etc. It is equipped with the required openings. Sizes 1 3/8" and 1 1/8" sockets which makes it a most complete wrench. A bar may be inserted for tremendous leverage.

TR-3X NET PRICE — Length 16" — Wt. 4 1/2 lbs.

This wrench is designed and forged with the popular hex openings 7/8" and 1 1/8". Will service the following wheels — International Trucks, Federal, Studebaker, Diamond T and Mack.

TR-3 NET PRICE — Length 16" — Wt. 4 1/2 lbs.

The illustrated leverage bar has a forged hex socket 1 3/8" which is required for service on the following wheels: G.M.C., Reo, Federal trucks. Also used as a "T" handle leverage bar with any universal truck wrenches.

TR-4 NET PRICE — Length 22" — Wt. 3 1/2 lbs.

For servicing FRUEHAUF TRAILERS and others. Has 1 1/8" six point opening socket. It can also be used as a "T" handle leverage bar with any universal wrenches.

TR-6 NET PRICE — Length 22" — Wt. 3 1/2 lbs.

KEN-UNIVERSAL leverage bar 22" long. Hex "T" handle will fit all universal truck wrenches (all makes). Forged from Chrome Nickel Alloy Steel, heat treated throughout, will stand tremendous leverage abuse.

TR-5 NET PRICE — Length 22" — Wt. 3 lbs.

Illustrated is a set of three popular wrenches for servicing Fords, Chevrolets and Dodges. The leverage bar will service G.M.C., Reo, and Federal trucks. Set consists of one each — TR-98, TR-2 and TR-4 leverage bar.

TW-3 SET — NET PRICE — Wt. 13 lbs.

(Set packed in individual carton)

Complete set of Ken Universal Truck Wrenches, for servicing nearly all models of trucks. One each of TR-98, TR-2, TR-3 and TR-4. No tire service man can afford to be without this set of time and labor saving wrenches.

TW-4 SET — NET PRICE — Wt. 16 lbs.

(Set packed in individual carton)

QUALITY KEN TRUCK WRENCH SETS

Ford Set

Complete for servicing all FORD truck wheels, set consists of TR-98 and TR-5 leverage bar. 22" long. 2 piece set.
TW-6 NET PRICE — Wt. 7 $\frac{3}{4}$ lbs.

FORD AND CHEVROLET Wrench set for removing all BUDD-DUAL WHEELS. Required by all tire service repairmen. (See illustration). Most difficult, stubborn jobs are handled quickly and easily with this set of well designed wheel and rim tools. Set contains one of each — TR-98, TX-9 and T-23.

TW-15 NET PRICE (3 pc. set) — Wt. 6 $\frac{1}{2}$ lbs.

CHEVROLET Truck Rim Wrench Set servicing all dual wheels. Set consists of one each — TR-2 and TR-5 leverage bar — 22" long.

TW-7 NET PRICE (2 pc. set) — Wt. 7 $\frac{1}{2}$ lbs.

NEW STUDEBAKER TRUCK WRENCH SET also for GMC TRUCKS has one 1 $\frac{3}{8}$ " socket and one 1 $\frac{1}{8}$ " socket. Set consists of one TR-3X and one 22" long leverage bar.

TW-16 NET PRICE (2 pc. set) — Wt. 7 $\frac{1}{4}$ lbs.

IMPROVED BUDNUT WRENCH. A special holding tool for Budd and Ford wheels. Holds Outer Cap Nut while turning Inner. Saves chiseling and delay. Wrench provided with lip to fit in bolt hole, if bolt is out to keep wrench from turning. Will save hours of grief.

TX-9 NET PRICE — Wt. 14 oz.

Impact Wrench Sets

Illustrated is the shock wrench which permits one man to loosen the toughest lug nuts on 90% of the popular trucks. The TR-8 shaft has forged on one end a $\frac{3}{4}$ " square to accommodate all $\frac{3}{4}$ " service sockets, thus enabling the operator to use it on any size lug nut, from the smallest truck to the largest. Its use is universal. Its importance is tremendous. The free swinging handle is used for either loosening or tightening. The handle revolves freely on the shaft through a 120° arc, building up a great momentum before it strikes the lugs on the shaft. TR-8 KEN shock wrench is so powerful it loosens the toughest lug nuts quickly, no matter how they may be rusted.



IMPACT WRENCH SET WITH METAL BOX AND SOCKETS consisting of TR-7, TR-8 with $\frac{1}{2}$ " square socket forged on end; TX-9, metal box; Six sockets $\frac{7}{8}$ ", $\frac{1}{2}$ ", $1\frac{1}{8}$ ", $1\frac{1}{4}$ ", $1\frac{3}{8}$ " and $1\frac{1}{2}$ ". (10 pieces). Set will service 90% of popular trucks.

TR-41 NET PRICE (see illustration) — Wt. 27 lbs.

Ford-Budd Wheels

IMPACT WRENCH SET WITH METAL BOX consisting of TR-7, TR-8, $\frac{1}{2}$ " square and $1\frac{1}{2}$ " sockets, TX-9 and metal box.

TR-42 Net PRICE (see illustration) — Wt. 22 lbs.

IMPACT WRENCH SET WITH METAL BOX AND SIX SOCKETS COMPLETE AS ILLUSTRATED consisting of TR-7, TR-8, with $\frac{1}{2}$ " square socket on end and metal box. Six Sockets: $\frac{7}{8}$ ", $\frac{1}{2}$ ", $1\frac{1}{8}$ ", $1\frac{1}{4}$ ", $1\frac{3}{8}$ " and $1\frac{1}{2}$ ". and NINE KEN SPECIALIZED TIRE CHANGING TOOLS: TX-9, T-26A, T-52, T-48A, T-19, T-20, T-23, T-5 and T-11 (18 pieces).

TR-40 NET PRICE (as illustrated) — Wt. 52 lbs.

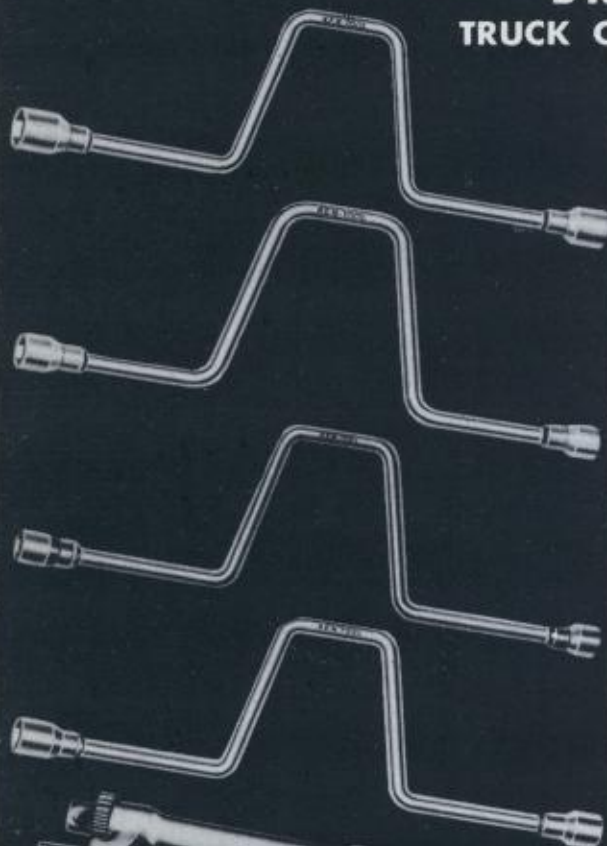
TR-8 NET PRICE—Shaft only length 25 $\frac{1}{2}$ "—Wt. 7 lbs.

TR-7 NET PRICE—Handle only length 24"—Wt. 10 lbs.



NEW 4-MOST POPULAR TRUCK BRACE WRENCHES

TRUCK OWNERS AND COMMERCIAL USE



FINEST QUALITY FORGED CHROME NICKEL ALLOY BRACE WRENCHES WILL STAND HARD USE

FORD Heavy duty brace wrench will fit all Budd Dual Wheels, also DODGE and others. Extra long. Chrome Nickel Alloy Steel. Socket size $1\frac{1}{2}$ " and $1\frac{3}{8}$ " square. Will stand hard use and has $11\frac{1}{4}$ " swing. (Ideal for individual truck owners.)

TR-10 NET PRICE — Extra long 33" — Wt. $8\frac{1}{2}$ lbs.

NEW CHEVROLET TRUCKS (1946 to 1950). Forged from Chrome Nickel Alloy Steel. Has one $\frac{1}{8}$ " socket for New Chevrolet Trucks (1946 to 1950) and one $\frac{7}{8}$ " socket for Chevrolet Trucks (1936 to 1950). With 10" swing for plenty of leverage. Heavy duty. (Ideal for individual truck owners.)

TR-11 NET PRICE — Extra long 32" — Wt. $6\frac{1}{2}$ lbs.

HEAVY DUTY BRACE WRENCH FOR FRUEHAUF TRAILERS, MACK TRUCKS, DIAMOND T, WHITE, REO, CHEVROLET, INTERNATIONAL TRUCKS, FEDERAL, STUDEBAKER, etc. Forged from Chrome Nickel Alloy Steel with $\frac{7}{8}$ " hex socket and $1\frac{1}{8}$ " socket. Has $11\frac{1}{4}$ " swing with plenty of leverage for the most stubborn nuts. NOTE — Sockets are tapered on the end for close clearance between lug nut and narrow recess which is very important. (Ideal for individual truck owners.)

TR-12 NET PRICE — Extra long 33" — Wt. $6\frac{3}{4}$ lbs.

NEW STUDEBAKER, GMC, REO, FEDERAL AND OTHER TRUCKS. This popular brace wrench is forged from Chrome Nickel Alloy Steel with the following deep sockets; $1\frac{1}{8}$ " and $1\frac{1}{4}$ ". Will remove the most stubborn nuts. $11\frac{1}{4}$ " swing for plenty of leverage. (Ideal for individual truck owners.)

TR-13 NET PRICE — Extra long 33" — Wt. 7 lbs.

IMPROVED UNIVERSAL POWERENCH CAN NOW BE USED ON ALL TYPES TRUCK WHEELS

The Ken Powerench for Budd Wheels is now "Universal" and will take care of all nuts and cap screws on all types of truck wheels and equipment including road equipment when used with new standard $\frac{1}{2}$ " or $\frac{3}{4}$ " square drive sockets. (See illustration.)

The Ken Universal Powerench is the most efficient and economical power tool on the American market.

The 3 to 1 ratio of the Ken Powerench allows one man to easily tighten or loosen any nut on any type of truck. Every Maintenance Shop Can Afford a Ken Powerench.



BUDD WHEELS



CAST SPOKE
WHEELS



INDUSTRIAL
EQUIPMENT



CONSTRUCTION
EQUIPMENT



U-BOLTS, ETC.

TR-43X—THIS SET RECOMMENDED IF CUSTOMER HAS HIS OWN SOCKETS

Set consists of Powerench, handle 36" long, solid bar handle 24", one each TR-52 Budd Wheel nut adaptor, TR-51 Motor Wheel adaptor and $\frac{3}{4}$ " service adaptors for use with all standard $\frac{3}{4}$ " service automobile sockets.

TR-44X NET PRICE (6 Pieces as shown.) Wt. $18\frac{1}{4}$ lbs.

TR-44SW—FOR ALL TRUCKS—OLD OR NEW

Universal set consists of Powerench, two handles 36" and 24" long, one $\frac{3}{4}$ " service adaptor, six sockets $\frac{7}{8}$ ", $1\frac{1}{8}$ ", $1\frac{1}{4}$ ", $1\frac{1}{2}$ ", $1\frac{3}{4}$ " and $1\frac{1}{2}$ " and one special TR-52 $1\frac{1}{8}$ " square adaptor for Budd wheels and TR-51 adaptor for Motor wheels. Will handle all popular trucks etc.

TR-44SW NET PRICE (12 Pieces as shown.) Wt. 23 lbs.

FOR BUDD WHEELS ONLY—Set consists of Powerench and two handles. Solid bar and tube, both approximately 24" long.

TR-43 NET PRICE (3 Piece set) Wt. $15\frac{1}{2}$ lbs.

POWERENCH PARTS AND ACCESSORIES

These parts may be ordered separately in case they are lost, worn out or broken.

TR-45 BAR HANDLE	TR-53 36" LONG TUBE HANDLE
TR-46 TUBE HANDLE	TR-52 ADAPTOR SQ. BUDD NUT ($1\frac{1}{8}$)
TR-47 PINION GEAR	TR-51 ADAPTOR FOR MOTOR WHEELS ($1\frac{1}{8}$)
TR-48 PINION STUD NUT AND WASHER	TR-54 $\frac{1}{2}$ " SERVICE ADAPTOR
TR-49 INNER WRENCH WITH GEAR	TR-55 $\frac{3}{4}$ " SERVICE ADAPTOR
TR-50 OUTER WRENCH	



QUALITY UNIVERSAL WHEEL PULLER AND CAR, TRUCK STANDS

Illustrated is one of the finest and most popular puller on the market today. With the sliding legs which adapt themselves readily to any hub regardless of the number of screw studs.

Legs extend to include 8" bolt circle. Will work on 98% of cars and light trucks. Another fine feature of the Ken Universal Wheel puller is the screw with fine threads which exerts a tremendous leverage. Puller is also equipped with a sliding bearing and a floating cap.

With these outstanding features any operator can, in a few minutes, attach puller to the hub, draw screws tightly by driving on handle against axle. Once tight a slight hammer blow on end of screw stud will remove the most stubborn hub. Forged from Chrome Nickel Alloy Steel. All parts properly heated for hard use and long life. Fully guaranteed.

T-500 NET PRICE — Wt. 10½ lbs.

(Complete with three legs and drive handle)

T-500H NET PRICE — Wt. 2 lbs. (Handle for wheel puller)

T-500L NET PRICE — Wt. 1¼ lbs. (Leg for T-500 wheel puller)

Here illustrated is the latest improved KEN FORD WHEEL PULLER ADAPTOR which quickly converts any stud type puller for all Ford wheel pulling service. ADAPTOR WORKS WITH ALL TYPES OF SIMILAR STUD PULLERS.

By simply sliding the adaptor into the groove on the hub (see illustration) and bolting two arms of the T-500 wheel puller. Will easily remove the most stubborn FORD drum, eliminating danger to the operator and damage to parts. FORGED from Chrome Nickel Alloy Steel, carefully heat-treated for long life and hard use. Guaranteed.

T-500A NET PRICE Ford Wheel Adaptor — Wt. 3½ lbs.

Ken Quick Adjusting Car and Truck Stands Extra Strong, Extra Tough

They are the finest in construction, provide a quick and convenient method for supporting both cars and trucks. When making tire changes, body assemblies and general all around service station and garage use. FORGED BASE is so designed to prevent tipping.

THE SPECIAL RATCHET DESIGN insures absolute rigidity and long life. Positively prevents accidental release. Automatically locks in any position. To release simply pull up carrying handle. Designed for every day hard use.

T-124 NET PRICE — Height 20" — Low 12¼"
Wt. 21½ lbs. — Per Pair. (Capacity 2 Ton)

T-125 NET PRICE — Height 31" — Low 18¼"
Wt. 57 lbs. — Per Pair. (Capacity 7 Ton)



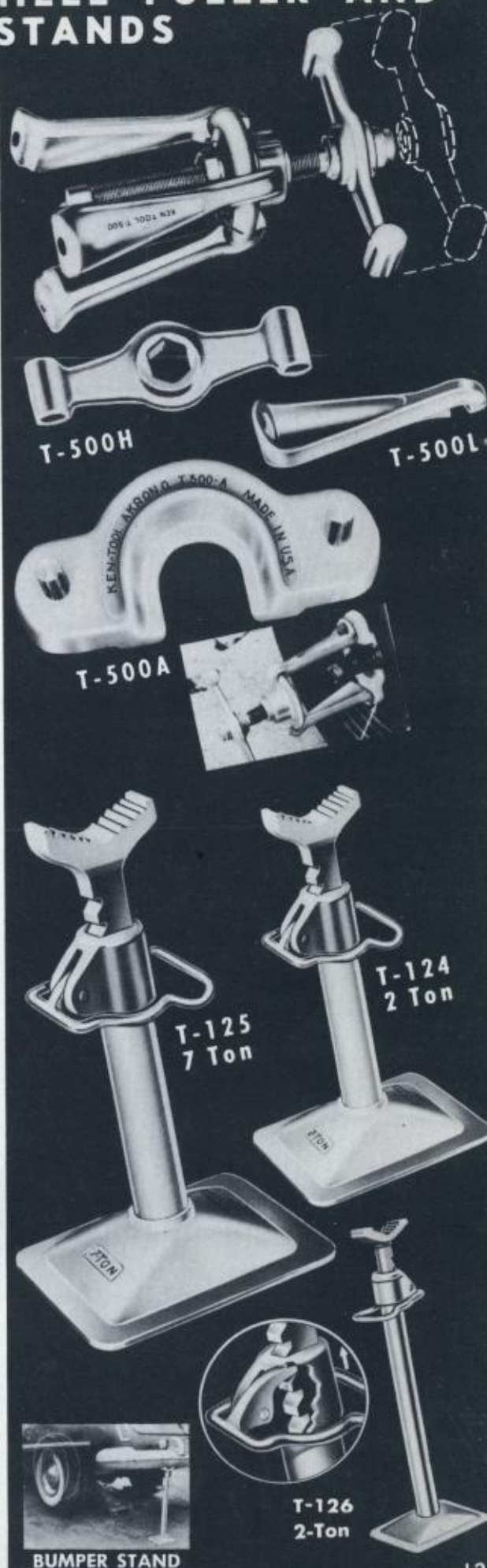
NEW KEN QUICK BUMPER STAND

At last a quick adjusting bumper support for easy new car wheel removal. Eliminates the use of secondary unsafe bumper jacks. Needed for all new cars with low over hanging fenders, simply jack car up in the normal manner with floor roller jack, slip new KEN bumper stand under bumper. Pull special designed ratchet up against bumper, locks automatically. Now drop wheel down clear of body. With roller jack, this now permits easy removal or New KEN stands are designed with special saddle, and can be used as supporting stands for front or rear axles, when making car repairs etc. Avoids tying up expensive floor jacks.

T-126 NET PRICE — (Packed 2 to a carton)

WT. 26 lbs per pair.

Capacity 2-ton — Height 32" — Low 23"

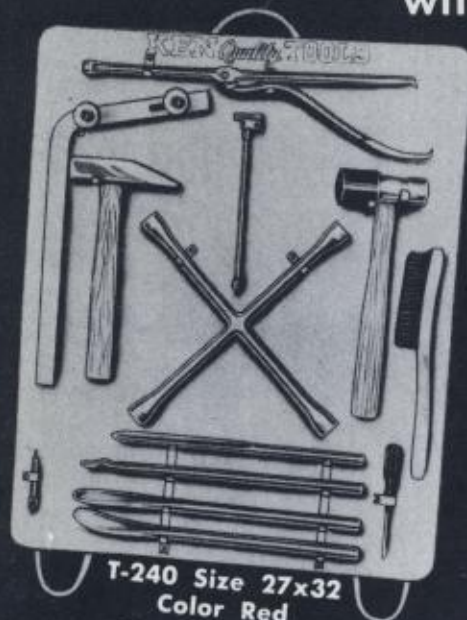


BUMPER STAND

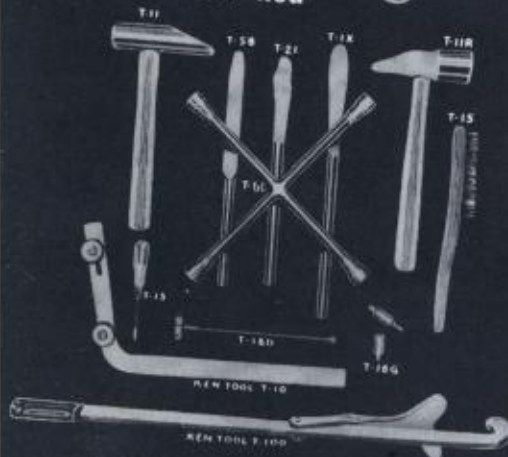
KEN SPECIALIZED TRUCK TIRE-TOOL SETS

WITH PORTABLE SERVICE BOARD

— NOW AVAILABLE —



**T-240 Size 27x32
Color Red**



Specialized Tire Service Board and Tools with 13 real time and labor saving tire tools. This practical tool board in any service station or tire shop will make a big impression on customers, who will know you are equipped to give quick, dependable service. Tools are all out-lined in white to prevent loss. Board made from heavy duty Tempered Masonite, sturdy, built to last — can be used outside or inside. Guaranteed.

- T-66 Hub cap—Passenger and Light Trucks
- T-10 Bead spreader
- T-16-D Valve stem retriever
- T-11 Tire hammer — 5 lbs.
- T-33-R Steel and rubber hammer
- T-60 4-way alloy rim wrench
- T-15 Wire brush
- T-5-B Tire iron—all-purpose
- T-21-R Tire iron—drop center
- T-1-X Tire iron—straight 18"
- T-2-X Tire iron—curved 18"
- T-16-G Valve repair tool (Deluxe)
- T-13 Awl prodding

T-240 NET PRICE —
Complete Board and Tools
(13 pieces) as illustrated, Wt. 39 lbs.

T-241 NET PRICE —
Tire Tool Set Only
(13 pieces) Wt. 21 lbs.

T-242 NET PRICE —
Ken Service Tool Board
Wt. 18 lbs.

All tools outlined in white on boards to avoid tool loss.

(Tool set packed in individual cartons)

PASSENGER AND LIGHT TRUCK SET ONLY

Here is the ideal tire changing tool set for all around service. You will save hours of time and make tire changing easier and faster with more efficiency, when you have the right tire tools. The set consists of one each of the following:

- T-11 Hammer
- T-5B Tire iron
- T-21 Patented drop center tire iron
- T-1X Straight spoon 18"
- T-11R Hammer (Steel & Rubber)
- T-60 New rim wrench 21½" long

- T-15 Wire brush
- T-13 Prodding awl
- T-16D Valve retriever
- T-16G Six-way valve
- T-10 Bead spreader
- T-100 Bead breaker

(Tool set packed in individual cartons)

T-256 NET PRICE (12 pc. set only) Wt. 26 lbs.

KEN SPEED-MASTER TIRE SPREADER

At last — a Ken quality tire spreader with real features that all service stations, garages and tire repair shops will want and can afford. Spreads passenger and truck tires 12½ inches quickly and easily for inspecting and repairing.

1. Tires revolve on rollers — allowing quick and easy inspection.
2. Sturdy framework built of steel — Guaranteed for hard use.
3. Large strong foot pedal gives speedy powerful operation and locks the tire in an open position.
4. Tires held in upright position by bars.
5. Work illuminated by protected electric light with 6 ft. insulated extension cord.
6. Strong jaws built to hold the heaviest tires open.
7. Tool tray to hold necessary working tools.
8. Small pedal releases tire quickly to normal position.



T-880 — NET PRICE Wt. 74 lbs.

Floor space 15 x 18 inches. Height 65 inches. Color bright red.

KEN SPECIALIZED TRUCK TIRE-TOOL SETS

WITH PORTABLE SERVICE BOARD

— NOW AVAILABLE —

Here is truck tire efficiency. From the smallest to the largest. Job designed wheel and tire changing tools that effect a definite savings in both time and labor. Very impressive in any service shop. Board provides a place for all tools. Prevents tool losses as tools are outlined in white. Design and quality beyond comparison. Boards made from heavy duty tempered masonite . . . sturdy . . . built to last. Can be used inside or outside. Guaranteed.

- T-95 Truck 4-way forged from chrome nickel alloy
- T-13 Awl prodding
- T-11-C Tire hammer for loosening stubborn beads
- TR-2-X NEW CHEVROLET wrench
- T-35 Truck tire hammer steel and rubber 7½ lbs.
- T-25 New lock ring for Firestone 5° degree
- T-26-A Driving iron for loosening beads
- T-16-D Valve stem repair tool and retriever
- TX-9 Wrench Budd nut
- T-23 Famous Ken Firestone lock ring remover
- T-19 Truck tire iron straight 23" long
- T-20 Truck tire iron curved 23" long
- T-48-A Improved lock ring replacer
- T-52 Dual purpose bead loosening tool and leverage bar — for Universal truck wrenches

T-250 NET PRICE — Complete Service Board and Tools
(14 pieces) as shown on large illustration. Wt. 88 lbs.

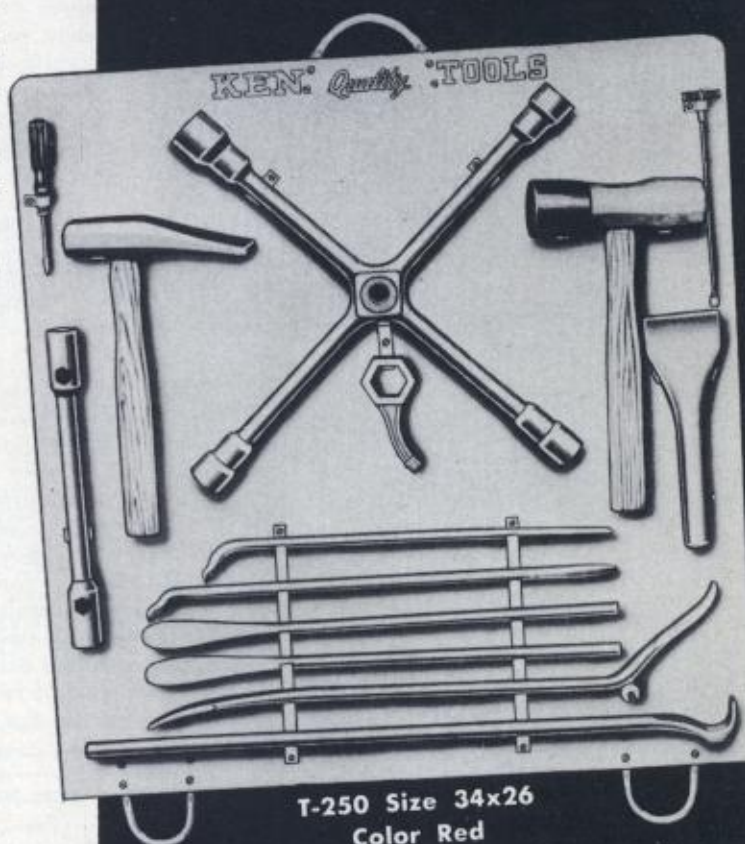
T-251 NET PRICE — Truck Tire Tool Set
(14 pieces) as shown on large illustration. Wt. 58 lbs.

T-254 NET PRICE — Ken Service Tool Board
Wt. 17 lbs.

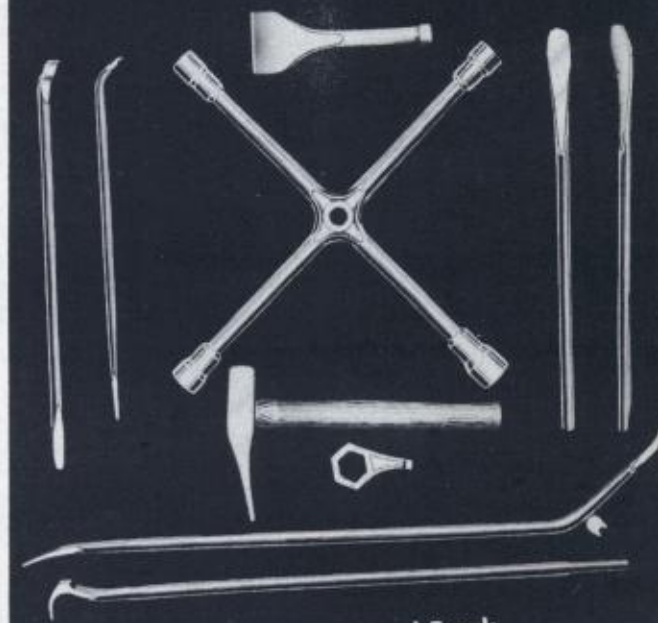
KEN TRUCK TOOL SET ONLY

- T-23 Famous KEN Firestone lock ring tool
- T-25 New lock ring for Firestone 5° degree
- T-26 A Driving iron for loosening truck beads
- T-95 Truck 4-way with necessary sockets
- T-19 Truck tire iron straight 23" long
- T-20 Truck tire iron curved 23" long
- T-48A Improved lock ring replacer (now longer)
- T-11C Finest truck tire hammer 6 lbs.
- TX-9 Budd nut holding wrench
- T-52 Bead loosening tool and leverage bar Dual purpose, 32" long.

T-255 NET PRICE . . . 10 piece set only . . . Wt. 46 Lbs.
(Set packed in individual cartons for re-shipping to your accounts.)



T-250 Size 34x26
Color Red

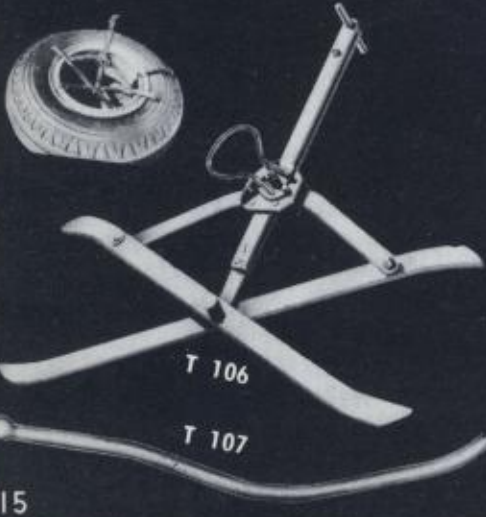
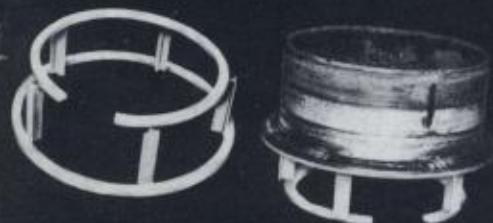
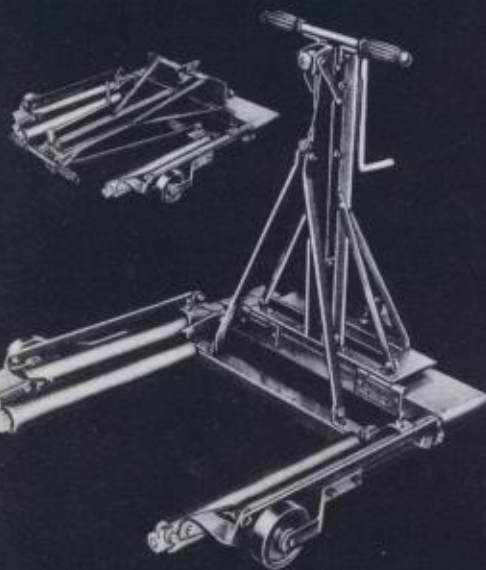


Popular All 'Round Truck
Tool Set Only —

NEW TRUCK WHEEL DOLLIES TRUCK DEMOUNTING STANDS



Can also be used to cart batteries, etc.



Illustrated is the finest all around truck dual wheel dolly ever designed. The operator can now remove or replace dual or single wheels with little or no effort. The only dolly which permits operator to easily and quickly line up wheel holes with studs on wheel by simply turning top handle left or right. This shifts the lower carriage in a straight vertical line, left or right, making it easy to spot wheel onto studs. The drop down plate provides a place to carry batteries or any other object. Portable . . . requires little floor space. Sturdy construction—a real time and labor saver. Simple to use.

T-102 NET PRICE — Wt. 29 lbs.

New All-Purpose Heavy-Duty Dual or Single Wheel Lifter (With new type easy ratchet lift . . . portable.)

Now at last an easy to handle dual or single wheel remover. Handles all sizes and weights. Quick and easy. No more crawling under trucks to keep adjusting a jack. Simply jack wheels off ground, push the easy to roll Ken lifter under the dual or single wheels, crank ratchet to left slightly up on wheels then pull the Ken lifter back and you are ready to push your wheels to any desired spot over rough or uneven floors, lower wheels to the floor and pull lifter back. The tremendous advantage is that you can spot wheels quickly onto the axle with little or no effort. One man does the work of two. The simplest and most compact wheel lifter on the market.

T-105 NET PRICE — Wt. 160 lbs.

NEW KEN-HEAVY DUTY TIRE STANDS (For 20" and 22" wheels.)

Used for dismounting and mounting truck, bus and heavy duty tires. Solid, will not wobble. Now truck tire changing is made easy with the new Ken developed two size stands. Both are needed by all truck tire repairmen. Stand holds the tire at just the right height from the floor, permitting the operator to drive off beads with much less effort. Since the tire is suspended in mid-air with no floor restrictions on the tire or valve stems, thus allowing truck beads to drop clear from rim. Turning stand over you are now ready to mount. It allows the operator to drop tire over rim and seat the first bead with little or no effort. Saving both time and labor. Sturdy construction.

T-109 NET PRICE — 20" Budd Wheels — Wt. 25 lbs.

T-110 NET PRICE — 22" Rims — Wt. 28 lbs.

T-111 NET PRICE — (Per Pair)

Recommended to be purchased in pairs.

SUICIDE LOCK RING SAFETY TOOL

(For 20", 22", 24" truck rims)

WHY RISK A LIFE . . . OR BE INVOLVED IN LAW SUITS etc. . . when you can inflate truck tires the safe way with these new Ken quick adjusting lock ring holding tools. Truck tires may now be inflated without the fear of flying lock rings. Will handle most all types of dangerous open rims.

Simple and quick. Insert into rims (see photo) and pull up on handle, device quickly adjusts and locks itself to rims. One tool will handle 20", 22" and 24" rims. Made from the finest of alloys and tested beyond requirements.

T 106 NET PRICE.....(For 20", 22" and 24" open truck rims) Wt. 16 lbs.

T 107 NET PRICE.....(For all FORD and DODGE trucks) Wt. 6 lbs.

(Also may be used for others using Budd or similar spoke wheels. Will work on or off the truck.)



Removing Dual Truck Wheels — Fast and Easy



New Ken Tire Stands — permit easy truck tire removal from rim, as tire is suspended, which eliminates floor restriction.



KEN QUALITY VALVE TOOLS

New precision valve tool out performs all with six operations. Indispensable to any tire service man.

A—Easy out removing broken and damaged valve cores.

B—Re-threads and cleans inside valve core threads.

C—Deflates tire.

D—Replacing and inserting valve cores.

E—Rethreads and cleans outside valve stems.

F—Extension for mounting short rubber stems.

T-16G NET PRICE — Wt. 4 oz.

Deluxe 4-way repair tool which combines four valve tools into one. Valve core EZ out. Tire deflator and valve stem rethreader both inside and out.

T-16E NET PRICE

Tire valve tool and wrench. This tool cleans the outside threads, top threads, and inside valve stems. Also replacing and inserting valve cores.

T-16 NET PRICE

Deluxe valve stem retriever and valve tool for pulling and holding valve stem thru the rim while inflating and replacing tire on the rim. The other end of the valve repair tool is similar to the T-16.

T-16D NET PRICE

New Air Inflate Extension and Valve Stem Retriever

Simply screw onto tire valve, pull through rim hole. Holds valve stem in position while you inflate the air through this new air extension. Works on all passenger and truck tires, a real time and labor saver. No service station or tire repair shop can afford to be without this tool.

NET PRICE T-16 H

Valve stem base nut wrench. All rubber company's suggest tightening of base nuts on all tubes before placing into the tire.

T-8 NET PRICE — Wt. 5 oz.

T-7 NET PRICE — Wt. 5 oz.

Grease retainer and hub cap remover. Simple and efficient — saves time in lubricating or repairing wheel bearings. A very important tool which every service station or garage should have. (See Photos).

G-35 NET PRICE — Wt. 13 oz.



Removing Hub Cap

Removing Grease Retainer

Removing Grease Retainer

Removing Front Wheel Bearing

Ken reliable slow leak detector for testing slow tire tube leaks and light truck tubes. Saves time — saves tubes — needed in every service station — tire repair shops, etc. Wire used is the finest high grade, heat-treated for rust proofing, built to last indefinitely (patented).

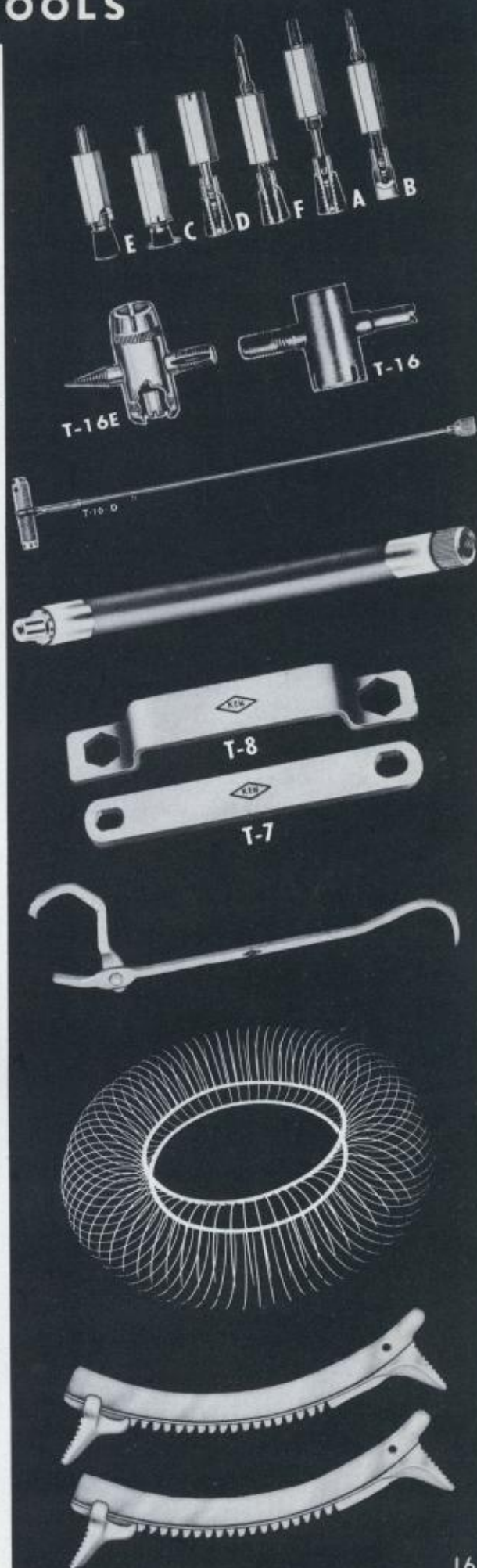
T-58 NET PRICE — Wt. 6½ lbs. (Finest made)



KEN TRUCK AND PASSENGER BEAD PROPS QUICKLY ADJUSTABLE UP TO 14" SPREAD

Illustrated is a pair of heavy duty bead props for all tire repair shops, service stations, etc. Spreads beads on passenger cars and also on the largest trucks and earth movers. Insert props, set jaws at desired opening, which can be up to 14". Spread permits making inside repairs without tying up expensive air spreaders, etc. No tire repair shop can afford to be without a pair of these time and labor saving universal bead props.

T-9 NET PRICE — (Per Pair) — Wt. 4 lbs.



KEN QUALITY GREASING AND BATTERY TOOLS



ONE MAN GREASE BAR. Designed to free frozen shackles and eliminates damage otherwise caused by attempting to force grease thru bushings. Length 30".

G-23 NET PRICE — Wt. 4 1/2 lbs.

Improved drain plug wrench. The male plugs on this wrench have all been given a half turn so as to have plugs set cross-cornered, which will permit the operator to remove or replace drain plugs with much less effort and time. Combined on one wrench are ten different sizes of lugs which are required to service all counter-sunk drain and filler plugs on most passenger cars and trucks.

G-14 NET PRICE — Length 9" — Wt. 15 oz.

New Re-Designed Ken Drain Plug Wrench For New Model Cars and Old

Illustrated is the new re-designed drain plug wrench. This wrench is far superior to any similar wrench, since it carries the necessary new sizes which are required for servicing most all new cars, will fit all the female plugs on late model cars, also most older models.

G-17 NET PRICE — Length 9" — Wt. 1 lb.

Very popular drain plug wrench for all male type drain plugs, with seven sizes combined in one tool, properly sized to fit practically all male drain plugs on all models, needed in every service station.

G-30 NET PRICE — Wt. 10 oz.

Ford universal drain plug wrench improved — wrench will not slip off nut, now has straight deep walls. Will fit Ford, Chevrolet, Pontiac, Buick, Plymouth, Chrysler, Dodge, Oldsmobile and others. Now made with 2 new extra sizes, for new Fords and Chryslers.

G-15 NET PRICE — Wt. 26 oz.

Finest battery tool ever designed. Has angle-nose. Designed especially for battery work, with patented adjustable feature. Will not injure the top of battery cases. Permits working in confined spaces. Valuable for all around general work.

B-207 NET PRICE — Wt. 7 oz.

New Ken universal battery post and terminal cleaner. Also cable spreader. Finest of its kind on the market. Saves time and effort. No service station or garage can afford to be without it.

B-23 NET PRICE — Wt. 11 oz.



NEW SUPER-GRIP KEN TERMINAL BATTERY CLAMP LIFTER. (Patent applied for). The terminal lifter that the trade has been looking for. Will operate in the tightest quarters on all new and old cars alike. Fast and smooth with positive jaw action. Superior to any lifter now on the market barring none. Forged from Chrome Nickel Alloy Steel.

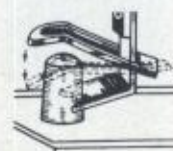
B-24 NET PRICE — Wt. 10 oz.

B-24X NET PRICE (Set of three tools; B-207, B-23 & B-24)

Illustrated is a sturdy, well made safety battery carrying strap. Jaws are made of heavy gauge steel. When lifted, jaws will lock on post (see sketch). Will not slip. Made from finest extra heavy, acid resisting material.

B-64 NET PRICE—Length 22" For long batteries

B-64A NET PRICE Length 16" For Standard batteries



3 MOST POPULAR ESSENTIAL WEDGED TOOLS . . .

Here are the three essential wedge tools that all garage mechanics, service station operators, etc., have been waiting for. All are forged from Chrome Nickel Alloy Steel — heat-treated throughout for long life and hard use.

KEN FORD SHOCK ABSORBER SPREADER — is definitely required for servicing all shock absorbers, including the latest engineering changes. Avoids damage to the bolt threads and makes a difficult job easy.

B-38 NET PRICE — Length 16" — Wt. 2 lbs.



Forcing Tapered Perch Pin Out of Shock Absorber

KEN PITMAN ARM WEDGE TOOL. Most universal Pitman arm puller made. Eliminates damage to costly steering assemblies and other similar operations. Can be used in close quarters. The tool works on practically all models including the late cars and trucks. Extremely useful where ever wedging is required.

B-37 NET PRICE — Length 10" — Wt. 2½ lbs.



Eliminates Damage To Costly Steering Assemblies When Removing Pitman Arms

KEN TIE-ROD SPREADER FOR FORDS, CHEVROLETS, etc. The illustrated wedge tool is similar to the B-38 shown above, except this tool has a wider slot to fit the rods on Fords, Chevrolets, etc. (See illustration). A real labor and time saver. Makes a difficult job simple and easy.

B-39 NET PRICE — Length 16" — Wt. 2 lbs.



Forcing Tapered Pin Out of Tie Rod

4 MOST POPULAR PRY BARS.

Illustrated here is one of the most popular handiest all around pry bars. Its 90° rolling head permits a wide range of uses. Especially good for exerting tremendous leverage in prying off gears, bearings, bushings, for lifting stuck valves, cylinder heads and many other difficult jobs. The tapered end is excellent for aligning holes.

Forged from Chrome Nickel Alloy Steel. Heat-treated throughout for hard use and long life.

PY-14 NET PRICE — Length 18½" — Wt. 2¼ lbs.

The illustrated popular pry bars have been especially designed to fill the great need and demand for a good quality all around pry bar that will take real abuse and punishment. For prying and alignment work these bars are invaluable and are very essential in every service shop.

Forged from Chrome Nickel Alloy Steel. Correctly heat-treated throughout for hard use and long life.

PY-15 NET PRICE — ¾" Stock — Length 24" — Wt. 2½ lbs.

PY-16 NET PRICE — 7/8" Stock — Length 30" — Wt. 4½ lbs.

Finest crow or jimmy bar ever designed. It is correct in its design, light in weight and proper in length for quick and easy handling. This new pry bar is without question the finest of its kind on the market today. No service station, garage or repair shop of any kind can afford to be without one or more of them.

Forged from Chrome Nickel Alloy Steel. Heat-treated throughout for hard use and long life.

PY-17 NET PRICE — Length 47" Wt. 9 lbs.



KEN QUALITY VISE-GRIP PLIERS

HIGH QUALITY FORGED PLIERS

PATENTED EXCLUSIVE ADJUSTMENT FEATURE — FINEST ON THE MARKET
IN DESIGN, QUALITY

Vise Grip Pliers

Power wrench is the world's most powerful and most useful hand tool, with the new heavy duty forged nickel chrome alloy steel jaws, you have a ton grip. Holds anything, any shape, jaws remain locked with hands removed. Very easily released, has greater range of jaw adjustment than any other type toggle wrench.

P-18A NET PRICE — Length 10" — 18 oz.

P-17A NET PRICE — Length 7" — 12 oz.

At last an all-purpose plier. In this NEW plier are combined 3 big features — the INVOLUTE JAW curve and the Super-Powered wire cutting feature, plus the thin nose.

The Super-Powered wire cutting jaws, coupled with power lock grip will cut $\frac{1}{4}$ " bolts by taking progressive bites. (See illustration). Easy to release from locked position.

PW-19 NET PRICE — Length 10" — Wt. 18 oz.

PW-20 NET PRICE — Length 7" — Wt. 12 oz.

Illustrated is one of the finest welding clamps ever to be designed. Aligns edges for welding, locks work into position, thus freeing both hands. Fender-welding, etc. Just place the U-shaped jaws over split edges to be welded, (see illustration), close the powerful toggle-lever, this locks the jaws to the work with a mighty non-slip grip aligning the work perfectly for welding or repairs.

Adaptable to almost any welding job, quickly and easily.

PW-21 NET PRICE — Wt. 24 oz.

Water Pump Plier

All purpose water pump plier has wide range of adjustment making it adaptable to a multitude of uses. Permits working in cramped places — No service station, garage, or mechanic can afford to be without it. Length $9\frac{1}{2}$ ".

B-200 NET PRICE (Fully Polished) — Wt. 12 oz.

Angle-Nose Battery Plier — Adjustable

Illustrated is a skillfully designed battery tool. Handles all battery terminals without injury to tops of battery case. Permits working in confined spaces. Has Patented adjustment.

B-207 NET PRICE — Length 7" — Wt. 7 oz.

Diagonal Cutting Pliers

A diagonal cutter designed for close cutting and long life. Forged from special chrome nickel alloy tool steel. Cutting knives are hand honed to razor-like edge and precision inspected to insure positive long cutting qualities. Precision milling of lap joints provides a tight fitting yet easy to operate tool. Fully polished and triple plated.

B-616 NET PRICE — Length 6" — Wt. $7\frac{1}{2}$ oz.

B-617 NET PRICE — Length 7" — Wt. 9 oz.

General Purpose Heavy Duty Self-Gripping Plier

A popular favorite with service stations, garages, etc. Has tremendous gripping strength. Built for rough usage. Has two Patented adjustments, the answer to bolt or rivet wear so prevalent in old-fashioned slip joint pliers. Fully polished, triple plated finish.

B-216 NET PRICE — Length 6" — Wt. 9 oz.

B-218 NET PRICE — Length 8" — Wt. 11 oz.

Ken All Purpose Universal Steel Drum Wrench Opens 15 Different Drum Closures, Quickly and Easily

This unique bung wrench opens at least 15 different closures on all types of steel drums. Oil companies, service stations, garages, industrial plants, etc., none can afford to be without one or more of these indispensable time and temper saving tools. Guaranteed.

G-16 NET PRICE — Length 15" — Wt. 2 lbs.



Fits all plugs.

SERVICE STATION EQUIPMENT

QUALITY DRIVEWAY SIGNALS

Here illustrated is a low-slung streamlined creeper that is tops in performance and value. The swirl rollers permit easy and free rolling over the roughest floors and obstacles.

The 2½" swirl rollers do not clog with dirt and grease. Frame is made from the highest quality kiln-dried Oak for hard use and long life. Guaranteed.

C-25 NET PRICE — (Wt. 25 lbs. per two creepers)

(Please order as packed — 2 to a carton)

C-25W NET PRICE — Wt. 12 lbs. (per four)

(Replacement rollers — 4 to a carton)

NOTE: You can now equip your present creeper with the new modern swirl rollers — they fit all models.



C-25 W

Ken-Quality Hand Power Wringer (With 3 to 1 gear reduction)

Illustrated is the easiest hand powered wringer on the market. It has the finest features that can be put into a wringer with 3 to 1 gear reduction for easy operation. Short sturdy frame with rust-proof finish and materials — Swivel clamps. 12 x 2" high quality white rubber rolls with quick adjustable roll pressure, automatic drain board, new type oilless bearings — Sturdy construction — attractive appearance. This is the outstanding wringer all service men have been asking for.

Two-year guarantee on all mechanical parts.

W-410 NET PRICE — Wt. (Packed one to a carton)

Ken Quality Gear Driven Wringer (Malleable Iron Frame)

Ken quality wringer for wash racks in service stations and garages, etc. Construction is sturdy and of the finest material for long life and hard use. Will clamp to barrels, tubs, etc. Rubber rolls are of the finest quality 12" x 1¾". 12" Heavy Duty Rubber Rolls

W-400 NET PRICE — Wt. 13½ lbs.

This new TOTE'N'STEP combination cart, seat, tool chest and step-up stool is the most practical service item available. It transports batteries, etc., with ease; makes an ideal seat for under-the-fender jobs. Lid opens for a huge tool chest. The tread covered top provides a slip-proof step-up for under-the-hood work, battery installations, washing car tops, etc. Dimensions: 12" x 12" x 28".

B-63 NET PRICE — Wt. 25 lbs.



Quality Service Station Signals

ROUND TREAD UNIT (Economy) with 3" bell and 25' quality round hose. Compact panel. Complete and ready to install.

T-655 NET PRICE — Wt. 10 lbs. (Packed one to a carton)

ROUND TREAD UNIT with 8" gong (same panel as T-650) and control unit as shown below with 40' of heavy duty hose. Complete and ready to install.

T-652 NET PRICE (As illustrated) Wt. 15 lbs. (Packed one to a carton)

T 653 NET PRICE (as shown) Wt. 7 lbs.

Consists of 6" gong, patented control unit ready to plug in. With 40 feet of round tread hose.

PATENTED FLAT TREAD UNIT

PATENTED FLAT-TREAD UNIT with 8" gong. Won't keep ringing if a car parks on tread. Guaranteed control unit. Compact concealed panel. Complete and ready to install.

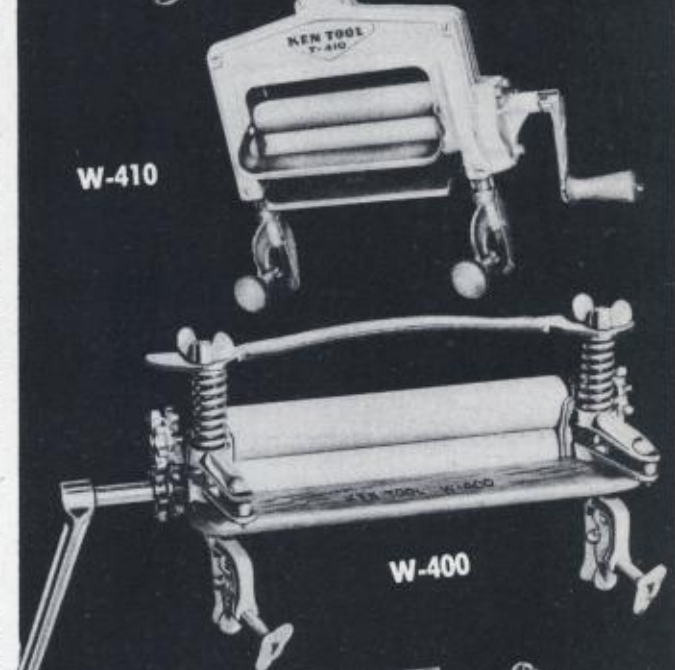
T-650 NET PRICE — WT. 15 lbs.



T 653



W-410



W-400



T-652



T-655



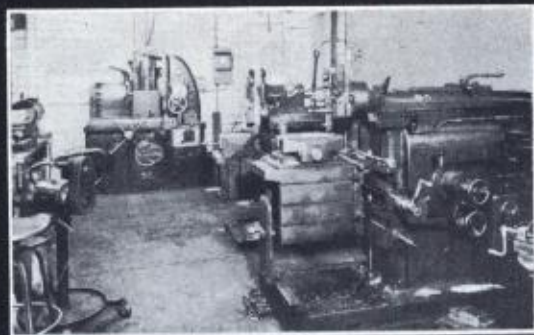
T-650

ALL SIGNAL UNITS PACKED IN INDIVIDUAL CARTONS

THE PLANT BEHIND THE PRODUCT



HAND FORGING KEN-TOOLS FOR HARD USE AND LONG LIFE



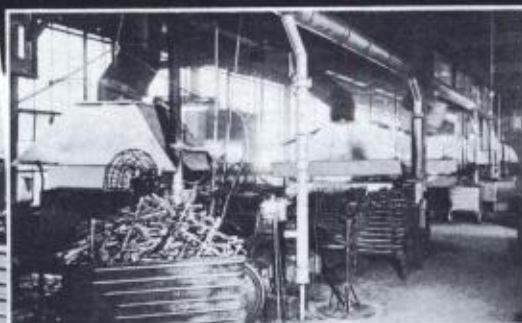
SMALL SECTION TOOL AND DIE DEPARTMENT



ROCKWELL HARDNESS TESTING AT FREQUENT INTERVALS, ASSURE YOU OF UNIFORM KEN HIGH QUALITY



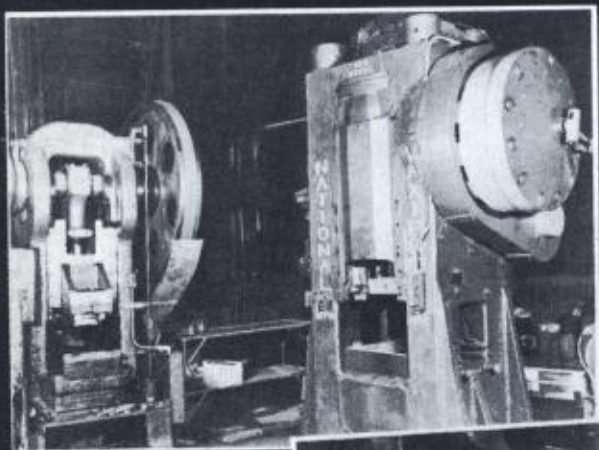
HOT FORGING KEN QUALITY SOCKET WRENCHES



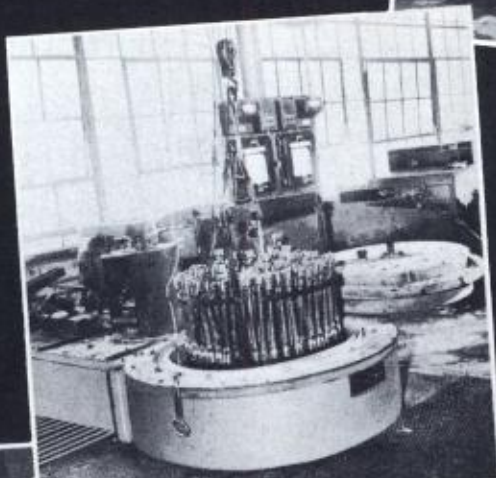
PARTIAL VIEW FORGING DEPARTMENT



BROACHING AND PRESS OPERATIONS



SECTION VIEW — HEAVY FORGING DEPARTMENT



HEAT TREATING NATIONALLY KNOWN KEN-TOOLS, FOR LONG LIFE AND HARD USE, IN MODERN PIT-TYPE FURNACE

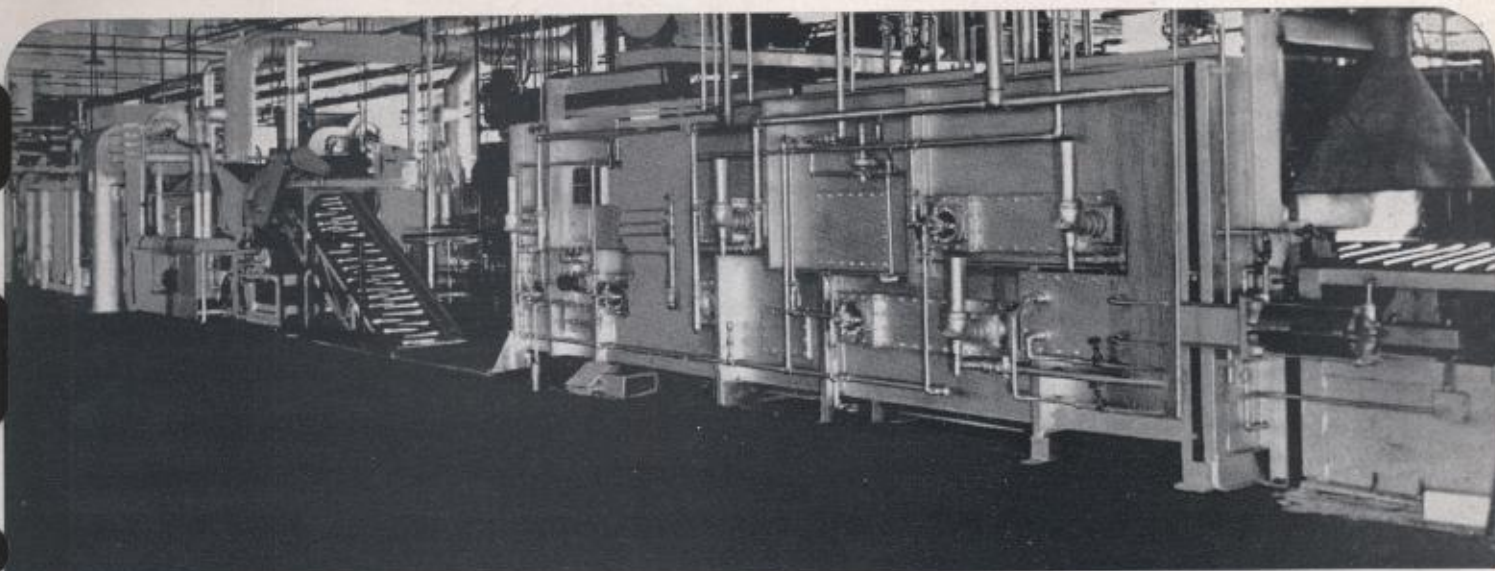


CLEANING KEN-TOOLS AFTER HEAT-TREATING OPERATION



ANOTHER SECTION VIEW — HEAVY FORGING DEPARTMENT

HEAT-TREATING KEN-TOOLS



Installed in the modern Ken-Tool factory is one of the finest and largest heat-treating furnaces in the industry. Here, Ken-Tools are tempered and hardened, all electrically controlled to avoid any human error, thus insuring quality and long life, which has made Ken-Tools world known and famous.

INDEX

SPECIALIZED WHEEL, RIM AND TIRE CHANGING TOOLS

	Page		Page
Battery Tools	17	Rubber Mallets	6
Bead Looseners.....	4-5	Rubber Heads (only)	5
(Passenger cars, trucks and tractors)		Spreaders (Bead and Tire)	2-5
Budd Wheel Wrenches	9-10-11	Steel and Rubber Hammers	6
Boards (Tool Sets)	13-14	Tire Changing Irons	2-3-4-5
Car Stands (Passenger and Trucks)	12	(Passenger, Truck, Tractor and Aircraft)	
Creepers	20	Tote 'N' Step	20
Demounting Stands (For Truck Tires)	15	Tube Testing Cage.....	16
Driveway Signals	20	Valve Tools.....	16
Grease Tools.....	17	Wedge Tools (Three Most Popular)	18
Hammers (Tire).....	6	Wheel Dollies (Truck)	15
Hammer Handles	5	Wheel Lifter (Passenger)	13
Impact Truck Bead Loosener.....	5	Wheel Puller (Universal)	12
Pliers	19	Wheel Puller Adaptor (Ford)	12
Pry Bars	18	Wheel Wrenches (Universal - Truck)	9-10-11
Rim Wrenches (Passenger 4-way)	7	Wheel Wrenches	9-10
Rim Wrenches (Light Truck 4-way)	8	Wrenches, Brace (Truck)	11
Rim Wrenches (Heavy Truck 4-way)	8	Wrenches, Impact (Truck)	10
Ring Replacers	5	Wrenches, Power (Gear Type)	11
Ring Tools.....	3-5	Wringer (Chamois, etc.)	20

Quality **KEN - TOOLS**

**MOST COMPLETE LINE OF JOB
DESIGNED WHEEL, RIM AND TIRE
CHANGING TOOLS, EQUIPMENT ...
GREASE AND BATTERY TOOLS**

• • •
**FOR SERVICE STATIONS,
GARAGES, FLEET OPERATORS
RETREAD AND REPAIR SHOPS**

• • •
**KNOWN AND USED
AROUND THE WORLD**

THE KEN-TOOL MFG. CO., AKRON, OHIO

THE KEN-TOOL MFG. CO.

REG. U. S. PAT. OFFICE

AKRON, OHIO

KEN-TOOLS ARE BETTER, TOUGHER, LONGER-LASTING
QUALITY LONG-REMEMBERED AFTER PRICE

DEALERS NET PRICES

APPLYING TO CATALOG NO. 50-51

EFFECTIVE APRIL 1, 1953

RETURNED GOODS POLICY: (1) No return unless by written permission.
(2) No return acceptable after merchandise has been out 12 months.
(3) A handling charge of 10% will be made and all returned goods must be prepaid.

Catalog Number	TOOL DESCRIPTION	Page	Weight Per Unit	Std. Pkg. Quan.	Dealer's Net Price
BATTERY TOOLS					
B-12	Bendix Brake Wrench		6 oz.	10	.70
B-23	NEW KEN UNIVERSAL BATTERY POST AND TERMINAL CABLE CLEANER	17	11 oz.	10	1.65
B-24	Ken Battery Terminal Lifter, NEW	17	8 oz.	10	2.70
B-24X	Set of Three Battery Tools — B-207, B-23 and B-24	17	26 oz.	10	6.05
BRAKE TOOLS AND WEDGE TOOLS					
B-37	KEN PITMAN ARM WEDGE—UNIVERSAL—ALLOY....	18	2½ lbs.	10	2.80
B-38	KEN SHOCK ABSORBER LINK PULLER—ALLOY	18	2 lbs.	10	2.45
B-39	KEN FORD TIE ROD SPREADER—ALLOY	18	2 lbs.	10	2.45
BATTERY TOOLS					
B-64	Battery Carrier—Safety Type—Long	17	4 oz.	20	.58
B-64A	Battery Carrier—Safety Type—Short	17	3 oz.	20	.55
QUALITY CREEPERS					
*C-25	Quality Creeper (order as packed, 2 per carton)	20	27 lbs.	2	7.95
*C-25W	Quality Wheels (packed 4 to carton)	20	4½ lbs.	4	3.45
GREASE TOOLS					
G-14	Wrench—Drain Plug	17	15 oz.	6	1.20
G-15	Wrench—Universal Drain Plug, Improved	17	26 oz.	10	1.80
G-16	New Bung Steel Drum Wrench, opens 15 different closures	16	2 lbs.	1	2.45
G-17	New, Re-Designed Drain Plug Wrench	17	16 oz.	1	1.20
G-23	Grease Bar—30" Long	17	4½ lbs.	6	2.70
G-30	Drain Plug Wrench	17	10 oz.		1.72
G-35	Grease Retainer and Hub Cap Remover	16	13 oz.	10	1.95
POPULAR QUALITY PLIERS					
B-201	Water Pump Pliers, Length 9½"	19	12 oz.	12	2.85
B-207	Battery Pliers (Adjustable), Length 7"	19	7 oz.	12	1.30
B-616	Diagonal Cutting Pliers (All-Purpose), 6"	19	7½ oz.	12	2.45
B-617	Diagonal Cutting Pliers (All-Purpose), 7"	19	9 oz.	12	2.60
B-216	General All-Purpose Pliers, Length 6"	19	9 oz.	12	1.60
B-218	General All-Purpose Pliers, Length 8"	19	11 oz.	12	1.80

This Price List Supersedes All Previously Published Prices

All orders accepted by us will be billed at prices in effect at time of shipment.

*Considered as Equipment.

The Ken-Tool Manufacturing Company

REG. U. S. PAT. OFFICE

AKRON 5, OHIO

Catalog Number	TOOL DESCRIPTION	Page	Weight Per Unit	Std. Pkg. Quan.	Dealer's Net Price
PETERSON VISE GRIP PLIERS					
P-17A	Pliers—Vise Grip, 7"	19	18 oz.	6	1.85
P-18A	Vise Grip Wrench (Improved 10" Size)	19	12 oz.	10	2.15
PW-19	New Thin-Nose Power Vise Grip Wrench and Wire Cutter, Length 10"	19	18 oz.	10	2.60
PW-20	New Thin-Nose Power Vise Wrench and Wire Cutter, Length 7"	19	12 oz.	10	2.25
PW-21	New Welding Clamp	19	24 oz.	10	2.95
PRY BARS — 4 MOST POPULAR					
Py-14	Pry Bar (Rolling-Head Style)	18	21¼ lbs.	10	2.75
Py-15	Pry Bar (Standard) 24¼" Long	18	21½ lbs.	10	2.40
Py-16	Pry Bar (Standard) Heavy Duty 30" Long (¾" Stock)	18	41½ lbs.	10	2.90
Py-17	Crow Bar (Essential All-Around, 47" Long)	18	9 lbs.	6	4.80
QUALITY SOCKETS FOR IMPACT WRENCHES and GEAR-POWER WRENCH SETS					
S-20	7/8" Socket, 3/4" Service		5 oz.	6	.95
S-21	15/16" Socket, 3/4" Service		5 oz.	6	.98
S-22	1" Socket, 3/4" Service		6 oz.	6	1.08
S-23	1-1/16" Socket, 3/4" Service		7 oz.	6	1.18
S-24	1-1/8" Socket, 3/4" Service		7 oz.	6	1.20
S-25	1-3/16" Socket, 3/4" Service		9 oz.	6	1.30
S-26	1-1/4" Socket, 3/4" Service		9 oz.	6	1.38
S-27	1-1/2" Socket, 3/4" Service		16 oz.	6	1.72
KEN TIRE CHANGING TOOLS — HAND-FORGED FROM CHROME-NICKEL ALLOY STEEL					
T-1	Tire Iron, Spoon-Type, Straight Pattern, 15"	2	24 oz.	10	1.10
T-1X	Extra Long, 18", Straight Spoon Tire Iron	2	1¾ lbs.	10	1.25
T-2	Tire Iron, Spoon-Type, Curved Pattern, 15" Long	2	24 oz.	10	1.10
T-2X	Extra Long, 18", Curved Spoon Tire Iron	2	1¾ lbs.	10	1.25
T-4	Tire Iron, Lock-Ring Remover and Hinge-Type Rim Tool	5	2¼ lbs.	10	1.70
T-5	Tire Iron, Long, General Purpose	3	20 oz.	10	1.40
T-5-B	Tire Iron, General Purpose, 17" Long	2	16 oz.	10	1.20
T-7	Wrench, Valve Stem Holder	16	5 oz.	10	.35
T-8	Wrench for Valve Stem Base	16	5 oz.	10	.45
T-9	KEN BEAD PROPS for Both Passenger and Trucks (Each)	19	4¼ lbs.	2	1.65
T-10	Tire Spreader with Adjustable Rollers	2	2½ lbs.	10	2.65
T-11	Hammer, Tire, 4½ Pounds	6	4½ lbs.	10	2.85
T-11B	Hammer, Tire, 5½ Pounds—Improved and Redesigned	6	5½ lbs.	6	3.10
T-11C	REVOLUTIONARY TIRE HAMMER FOR BREAKING LOOSE STUBBORN BEADS ON TRUCK AND PASSENGER TIRES	6	6 lbs.	10	3.95
T-11BH	Hammer Handle for T-11B Hammer	5	7 oz.	10	.48
T-11CH	18" Never-Slip, Octagon-Grip Handle	5	8 oz.	10	.50
T-11H	Handle for T-11 Hammer	5	6 oz.	10	.48
T-11R	NEW COMBINATION RUBBER AND STEEL TIRE HAMMER	6	2¾ lbs.	16	2.95
T-11RH	Rubber Head for T-11R, T-31 and T-33R	5	7 oz.	10	.75
T-11HN	Handle for T-11R Steel and Rubber Hammer	5	7 oz.	12	.48

NATIONALLY KNOWN. USED THROUGHOUT THE WORLD

*Considered as Equipment.

The Ken-Tool Manufacturing Company

REG. U. S. PAT. OFFICE

AKRON 5, OHIO

Catalog Number	TOOL DESCRIPTION	Page	Weight Per Unit	Std. Pkg. Quan.	Dealer's Net Price
T-11W	Wedges for all Tire Hammers (10c per Pair)	5	1 oz.	10	.10
T-13	Awl, Tire Prodding	13	2 oz.	10	.25
T-15	Brush with Long Curved Handle, Wire	13	6 oz.	10	.60
T-16	Valve Repair Tool and Wrench	16	1 oz.	10	.25
T-16D	Combination Valve Tool and Retriever	16	2 oz.	10	.45
T-16E	Valve Repair Tool (Four-In-One Type)	16	1 oz.	10	.45
T-16G	Precision Valve Tool (Performs Six Operations)	16	4 oz.	10	1.25
T-16H	Valve Extension and Tire Inflator	16	3 oz.	10	.95
T-16J	Truck Valve Stem Tool — a must in truck service work		6 oz.	12	1.20
T-17	Ken LifeGuard Tube Remover	2	28 oz.	10	2.75
T-18	Tire Tool, Combination, 21" Long	2	28 oz.	10	1.45
T-19	Tire Iron, Long, Straight Spoon-Type for Truck, Bus and Tractor	3	2½ lbs.	10	1.45
T-19A	Aircraft, Tractors and Large Trucks, 30" Long, Straight Spoon	3	3 lbs.	10	1.80
T-20	Tire Iron, Long, Curved Spoon-Type for Truck, Bus and Tractor	3	2½ lbs.	10	1.45
T-20A	Aircraft, Tractors and Large Trucks, 30" Long, Curved Spoon	3	3 lbs.	10	1.80
T-21	TIRE IRON, NEW KEN DROP-CENTER TIRE TOOL (Patented)	2	25 oz.	20	1.25
T-21R	DROP-CENTER TIRE IRON (Patented), 18" LONG, NO SLIPPING, NO TUBE PINCHING	2	30 oz.	10	1.40
T-22	Lock-Ring Remover, Combination, 18" Long	3	1½ lbs.	10	1.35
T-22X	Airplane Lock-Ring Remover		1½ lbs.	10	1.20
T-23	FAMOUS KEN Lock-Ring Remover and Replacer. Firestone special forged chrome-nickel alloy steel, 24" long	3	2 lbs.	10	1.65
T-23A	Heavy Duty, Extra Long, 30", Lock-Ring Remover and Replacer. For all heavy duty, large lock-ring rims and all standard lock-ring rims. This tool will stand the most severe abuse to which it is subjected.				
T-23A	Net Price — 30" Long		4½ lbs.		2.30
T-24	Heavy Truck Tire Iron for Goodyear Rims and Others	3	2¼ lbs.	10	1.40
T-25	NEW LOCK-RING TOOL REQUIRED FOR FIRESTONE 5 DEGREE RIMS AND ALL NEW FORDS	3	1½ lbs.	10	1.35
T-26A	Tire Driving Iron, NEW, Improved	4	4¾ lbs.	10	2.55
T-26B	New Impact Bead Loosening Tool, FINEST MADE	5	24½ lbs.	1	16.95
T-27	Lock-Ring Remover, 18" Long	3	1½ lbs.	10	1.35
T-28	Truck Tire Iron, 17" Long	3	2 lbs.	10	1.55
T-29	TRUCK TIRE MOUNTING TOOL FOR DRIVING FIRST BEAD DOWN OVER RIM, 18" LONG	3	2½ lbs.	10	1.80
QUALITY, FORGED TIRE-CHANGING HAMMERS					
T-31	NEW STEEL AND RUBBER Mallet, DOUBLE DUTY, 2-IN-1	8	36 oz.	10	2.45
T-33R	2-Way Combination Steel and Rubber Hammer with Ball Pein Head	6	2 lbs.	10	2.90
T-33RH	Rubber Head, Long Life Replaceable T-33R Hammer	5	6 oz.	10	.75
T-33HN	15" "Never Slip," Octagon-Grip Handle for T-33R	5	7 oz.	10	.48
T-34	RUBBER Mallet (COMBINATION STEEL) FOR HEAVY TRUCK TIRE CHANGING	6	6 lbs.	10	3.90
T-34HN	19" Heavy Duty, "Never-Slip," Octagon-Grip Handle for T-34, T-35 and T-36 Hammers	5	8 oz.	10	.50
T-34RH	Rubber Head, Long Life for T-34, T-35 and T-36 Truck Mallets	5	11 oz.	10	1.20
T-35	NEW TRUCK TIRE HAMMER, COMBINATION STEEL AND RUBBER	6	8½ lbs.	12	4.60

*Considered as Equipment.

The Ken-Tool Manufacturing Company

REG. U. S. PAT. OFFICE

AKRON 5, OHIO

Catalog Number	TOOL DESCRIPTION	Page	Weight Per Unit	Std. Pkg. Quan.	Dealer's Net Price
T-35HN	Handle for T-35 Hammer	5	8 oz.	10	.50
T-36	NEW TRUCK BEAD LOOSENING HAMMER, WITH ONE END REPLACEABLE RUBBER HEAD	6	6½ lbs.	12	3.95
T-36HN	Handle for T-36 Hammer	5	8 oz.	10	.50
TRUCK TIRE-CHANGING IRONS					
T-38	New Tire Changing Iron for Large Trucks, Etc. Straight Spoon, Length 30", Heavy Duty	3	4¾ lbs.	10	2.80
T-39	New Tire Changing Iron for Large Trucks, Etc. Curved Spoon, Length 30", Heavy Duty	3	4¾ lbs.	10	2.80
T-48A	NEW, EXTRA HEAVY-DUTY LOCK-RING REPLACER. 40" Long, Made from ¾" Alloy Stock — IMPROVED	5	5 lbs.	10	2.80
T-50	SPEEDWAY BEAD LOOSENING TIRE TOOL, 25"	4	3½ lbs.		2.55
T-51	New Farm Tractor Bead Loosening Tool	4	2¼ lbs.	10	1.90
T-52	DUAL PURPOSE, EXTRA HEAVY-DUTY BEAD LOOSENING TOOL AND LONG LEVERAGE BAR—33" Long	4	5¼ lbs.	10	2.95
BEAD SPREADERS					
T-53	PASSENGER AND LIGHT TRUCK BEAD SPREADER	5	2¾ lbs.	1	2.85
T-54	NEW TRUCK FRICTION BEAD SPREADER	5	6 lbs.	2	5.85
TUBE LEAK DETECTOR					
*T-58	High-Quality Tube Leak Detector — Finest Made	16	6½ lbs.	3	7.95
*T-58A	Truck Tube Leak Detector for Tubes 10.00-20 to 12.00-24....		21 lbs.	1	23.95

QUALITY ALLOY KEN 4-WAYS LAST MUCH LONGER THAN ORDINARY 4-WAYS DUE TO SPECIAL CHROME-NICKEL ALLOY STEEL AND CONSTRUCTION

T-59	New 4-Way Rim Wrench. Extra long, 21½" overall. Definitely needed in the commercial field for serving all late model cars with wide body fenders. HEAVY-DUTY ALLOY, 21½"	7	4½ lbs.	25	2.55
T-60	Forged 4-Way Wrench (Standard), one piece. ALLOY, 21½" Long	7	3¾ lbs.	25	1.75
T-61	Standard 4-Way Wrench. ALLOY, 21½" Long	7	3¾ lbs.	25	1.60
T-62	Standard 4-Way Wrench. ALLOY, 18" Long	7	2¾ lbs.	10	1.45
T-66	NEW KEN HUB CAP REMOVER	2	2¼ lbs.		2.85
T-70	SPEED KEN ALL-PURPOSE SAFETY TOOL (Per Set)	2	3¾ lbs.	10	2.90
EXTRA LONG, TRUCK 4-WAY RIM WRENCHES					
T-90	NEW LIGHT TRUCK 4-WAY. FOR CHEVROLETS. 1947 TO 1950 FORDS. G.M.C., DODGE, INTERNATIONALS AND MANY OTHERS. 23¾" LONG, ALLOY STEEL	8	6¼ lbs.	15	3.45
T-95	NEW, HEAVY, TRUCK RIM WRENCH. SOLID, ONE PIECE. ALLOY STEEL. EXTRA LONG, 25½" — FINEST ON THE MARKET	6	15 lbs.	8	9.20
T-96	NEW TRUCK 4-WAY WHEEL WRENCH. Heavy duty, forged alloy. One piece, similar to T-95 less hole in center. Overall length 25½"	6	14 lbs.	8	8.60
T-97	NEW TRUCK 4-WAY WHEEL WRENCH. Forged alloy steel. One piece, overall length 24¾". Weight 12 pounds....	6	12 lbs.	8	7.49
BEAD BREAKERS					
*T-99	Ken De Luxe Bead Breaker — IMPROVED	4	15 lbs.	3	8.40
T-100	New Kenspeed Bead Loosening Tire Changing Tool	4	6 lbs.	10	4.60

KEN FAMOUS TIRE CHANGING IRONS ARE THE FINEST IN DESIGN AND QUALITY

*Considered as Equipment.

The Ken-Tool Manufacturing Company

REG. U. S. PAT. OFFICE

AKRON 5, OHIO

Catalog Number	TOOL DESCRIPTION	Page	Weight Per Unit	Std. Pkg. Quan.	Dealer's Net Price
TRUCK WHEEL DOLLIES					
*T-102	Universal Truck Wheel Dolly	15	29 lbs.	1	24.50
*T-105	Dual-Wheel Truck Dolly	15	160 lbs.	1	137.50
SUICIDE LOCK-RING TOOL					
*T-106	Suicide Lock-Ring Safety Tool	15	16 lbs.	3	10.50
T-107	Suicide Lock-Ring Safety Tool for Ford and Dodge	15	6 lbs.	10	2.80
TRUCK DEMOUNTING STANDS					
*T-109	Truck Tire Demounting Stand — 20" Rim	15	26 lbs.	1	11.40
*T-110	Truck Tire Demounting Stand — 22" Rim	15	29 lbs.	1	11.85
*T-111	Truck Tire Demounting Stands — Pair, 20" and 22"	15	55 lbs.	2	23.25
CAR AND TRUCK AXLE STANDS					
*T-124	2-TON CAR AXLE STAND — Packed in Pairs, per Pair....	12	21½ lbs.	2	13.70
*T-125	7-TON TRUCK AXLE STAND—Packed in Pairs, per Pair	12	57 lbs.	2	24.90
*T-126	KEN BUMPER AND AXLE STAND — Packed in Pairs, per Pair	12	26 lbs.	2	14.00
JOBBER'S DISPLAY AND STOCK MERCHANDISERS					
T-150	KEN 4-WAY AND UNIVERSAL WRENCH MERCHANDISER	Freight Paid		1	
T-151	KEN 4-WAY AND UNIVERSAL WRENCH MERCHANDISER ONLY — LESS TOOLS		18 lbs.	1	15.75
T-152	KEN TIRE CHANGING TOOL MASTER MERCHANDISER	Freight Paid		1	
T-153	KEN TIRE CHANGING TOOL DISPLAY ONLY — LESS TOOLS		25 lbs.	1	30.00
BEAD BREAKER — IMPROVED					
*T-200	KEN CHAMPION BEAD BREAKER — FINEST ON MARKET — ALLOY, IMPROVED	4	8 lbs.	8	6.90
TOOL SETS WITH SERVICE BOARDS					
*T-240	COMPLETE BOARD AND TOOLS — 14 Pieces	13	39 lbs.	1	27.25
T-241	TIRE TOOL SET ONLY — 13 Pieces	13	21 lbs.	1	20.65
*T-242	KEN SERVICE TOOL BOARD ONLY	13	18 lbs.	1	6.60
T-250	TRUCK COMPLETE SERVICE BOARD AND TOOLS — 14 Pieces	14	88 lbs.	1	44.00
T-251	TRUCK TIRE TOOL SET ONLY — 14 Pieces	14	58 lbs.	1	36.55
*T-254	TRUCK KEN SERVICE TOOL BOARD ONLY	14	17 lbs.	1	7.45
TOOL SETS ONLY					
T-255	KEN ALL-AROUND TRUCK TIRE TOOL SET	14	46 lbs.	1	28.30
T-256	KEN PASSENGER TIRE TOOL SET — 12 Pieces	12	26 lbs.	1	21.05
UNIVERSAL WHEEL PULLERS					
T-500	Ken Universal Wheel-Hub Puller — Alloy Steel	12	10½ lbs.	1	14.50
T-500-A	IMPROVED FORD WHEEL PULLER ADAPTOR	12	3½ lbs.	1	3.65
T-500-H	Handle for T-500 Wheel Puller	12	1 lb.	1	1.60
T-500-L	Leg for T-500 Wheel Puller	12	1 lb.	1	1.90
SERVICE STATION SIGNAL UNITS					
*T-650	Signal for Service Station — 8" Gong. Complete, nothing else to buy — finest on the market	20	15 lbs.	1	32.50
*T-652	Signal for Service Station — 6" Gong. Complete, nothing else to buy	20	13 lbs.	1	28.50
*T-653	Utility 6" Electric Gong with 40' of round tread hose	20	8½ lbs.	1	23.00
*T-655	Service Station Signal, Complete with 25' hose	20	10 lbs.	1	14.50
KEN UNIVERSAL TRUCK-RIM WRENCHES AND SETS					
Forged From Chrome-Nickel Alloy Steel For Hard Use and Long Life					
TR-1	Wrench, Universal Truck Rim — Length 16", Alloy	9	4½ lbs.	10	2.95
TR-2	Wrench, Universal Truck Rim — Length 16", Alloy	9	4½ lbs.	10	2.95
TR-2X	UNIVERSAL TRUCK WRENCH FOR 1947 CHEVROLET TRUCKS. Sizes 15/16" and 1"	9	4¼ lbs.	10	2.95
TR-3	Wrench, Universal Truck Rim, Length 16", Alloy	9	4¼ lbs.	10	2.95
TR-3X	NEW STUDEBAKER UNIVERSAL TRUCK WRENCH. Length, 16", Alloy	9	4¼ lbs.	10	2.95

The Ken-Tool Manufacturing Company

REG. U. S. PAT. OFFICE

AKRON 5, OHIO

Catalog Number	TOOL DESCRIPTION	Page	Weight Per Unit	Std. Pkg. Quan.	Dealer's Net Price
TR-4	Wrench, Universal Truck Rim. Length 22". Longer Alloy 13/16"	9	3 1/2 lbs.	10	1.75
TR-4X	Wrench, Universal Truck Rim. Length 22". Alloy 15/16"		3 1/2 lbs.	10	1.75
TR-5	Hex-Handle Leverage Bar or T-Handle for inserting into hex holes. All universal truck wrenches. Length 22". Alloy	9	3 lbs.	10	1.40
TR-6	Universal Truck Wrench for Fruehauf Trailers and Others. Size 1-1/16"	9	3 1/2 lbs.	10	1.75
NEW TRUCK WRENCH FOR LATE MODELS AND DAYTON, ERIE WHEELS					
TR-9	Wrench, Universal Truck Rim. Length 16", Alloy. Size 1-1/16" x 1-1/4"	9	4 1/4 lbs.	10	2.95
SHOCK IMPACT WRENCH SETS					
TR-40	Impact Wrench Set, Complete. Metal Box and 18 Tools	10	52 lbs.	1	42.68
TR-41	Impact Wrench Set, Metal Box and 6 Sockets — Total, 10 Pieces	10	27 lbs.	1	24.94
TR-42	Impact Wrench Set with TR-7 and TR-8, Metal Box, 1 1/2" Socket and TX-9 — 5-Piece Set	10	23 lbs.	1	19.97
TR-7	Impact Wrench Handle Only	10	10 lbs.	1	7.20
TR-8	Impact Shaft Only With 13/16" Square One End	10	7 lbs.	1	7.20
GEAR POWERWRENCH SETS					
*TR-43	Power Wrench Set for Budd Wheels Only — 3 Pieces, 90-Day Guarantee	11	15 lbs.	1	29.70
*TR-44SW	Gear Powerwrench Set — 12-Piece Set as Shown	11	23 lbs.	1	44.13
*TR-44X	Gear Powerwrench Set — 6-Piece Set as Shown	11	18 1/4 lbs.	1	36.85
REPAIR PARTS FOR POWER WRENCHES					
*TR-45	Bar Handle, 20" Long — Solid	11	2 1/2 lbs.	1	1.30
*TR-46	Tube Handle, Standard — 20" Long	11	3 lbs.	1	1.80
*TR-47	Pinion Gear	11	12 oz.	1	4.70
*TR-48	Pinion Stud (includes Nut and Washer)	11	6 oz.	1	1.70
*TR-49	Inner Wrench Only (90-Day Guarantee)	11	5 lbs.	1	11.20
*TR-50	Outer Wrench Only (90-Day Guarantee)	11	5 lbs.	1	11.30
ACCESSORIES FOR POWER WRENCHES					
*TR-51	Motor Wheel Adaptor, 1-3/16" hex	11	4 oz.	1	1.10
*TR-52	Inner Cap Nut Adaptor, Square Hole 13/16"	11	5 oz.	1	1.30
*TR-53	Tube Handle, 36" Long for Large Diameter Wheels	11	4 1/2 lbs.	1	3.40
*TR-54	1/2" Service Adaptor for Gear Powerwrench	11	5 oz.	10	3.10
*TR-55	3/4" Service Adaptor for Gear Powerwrench	11	5 oz.	10	3.10
POPULAR FORD-BUDD WHEEL WRENCH — ALLOY					
TR-98	Budd Nut Wrench — Ford (1-1/2" x 13/16") Formerly T-98	9	4 1/2 lbs.	10	2.95
UNIVERSAL TRUCK WHEEL WRENCH SETS—ALLOY STEEL					
TW-2	New Post-War Chevrolet Truck Wrench Set. Consists of one TR-2X and TR-5		7 1/4 lbs.	6	4.35
TW-3	WRENCH, Universal Truck Rim Set — consists of 3 pieces	9	13 lbs.	6	7.65
TW-4	WRENCH, Universal Truck Rim Set — consists of 4 pieces	9	16 lbs.	6	10.60
TW-6	KEN FORD TRUCK RIM WRENCH SET — consists of one TR-98 and TR-5 Leverage Bar	10	7 3/4 lbs.	6	4.35
TW-7	KEN CHEVROLET TRUCK RIM WRENCH SET. Consists of one each of TR-2 and TR-5 Leverage Bar	10	7 1/2 lbs.	6	4.35
TW-15	COMPLETE KEN TRUCK WRENCH SET — FOR RE- MOVING ALL BUDD DUAL WHEELS. Set consists of 3 pieces	10	6 1/2 lbs.	6	5.55
TW-16	NEW STUDEBAKER TRUCK WRENCH SET. Consists of one each of TR-3X and TR-5 Leverage Bar, 22" Long, Hex., Alloy	10	7 1/2 lbs.	1	4.35
TX-9	IMPROVED BUDD NUT WRENCH	10	15 oz.	12	.95
W-400	NET PRICE Gear Driven Wringer with 12" Rolls	20	13 1/2 lbs.	1	12.90

*Considered as Equipment. Prices and designs subject to change without notice